

# Screening for Postmenopausal Osteoporosis: A Summary of the Evidence

Heidi D. Nelson, MD, MPH; Mark Helfand, MD, MPH; Steven H. Woolf, MD, MPH; Janet D. Allan, PhD, RN

## Epidemiology

Half of all postmenopausal women will have an osteoporosis-related fracture during their lives, including one-quarter who will develop a vertebral deformity<sup>1</sup> and 15% who will suffer a hip fracture.<sup>2</sup> Hip fractures are associated with high mortality rates and loss of independence.<sup>3,4</sup> Although many vertebral fractures are detected only incidentally on radiography, some cause severe pain, leading to 150,000 hospital admissions per year in persons older than 65, 161,000 physician office visits, and more than 5 million days of restricted activity in those 45 years of age or older.<sup>5</sup>

Low bone density has been used to predict risk for fractures as well as to diagnose osteoporosis. Osteoporosis has been defined as “a systemic skeletal disease characterized by low bone mass and microarchitectural deterioration of bone tissue, leading to enhanced bone fragility and a consequent increase in fracture risk.”<sup>6,7</sup> This definition emphasizes that, in addition to bone mass, the

structure of bone is also an important factor in the pathogenesis of fractures.

A World Health Organization working group<sup>8</sup> proposed that osteoporosis should be diagnosed in epidemiologic studies when bone mineral density is 2.5 standard deviations (SDs) or more below the mean for healthy young adult women at the spine, hip, or wrist (corresponding to a T-score of  $\leq -2.5$ ) or when patients have a history of an atraumatic fracture.<sup>9</sup> By the World Health Organization definition, up to 70% of women older than 80 have osteoporosis.<sup>10</sup> Age is also an important factor in the relationship between bone density and the absolute risk for fracture. Older women have a much higher fracture rate than younger women with the same bone density because of increasing risk from other factors, such as bone quality and tendency to fall.<sup>11</sup>

Despite the high prevalence of osteoporosis and the effect of fractures on mortality, independence, and quality of life, it is not clear whether it is appropriate to screen asymptomatic postmenopausal

From the Evidence-based Practice Center and Division of Medical Informatics and Outcomes Research, Oregon Health & Science University (Nelson, Helfand), Portland, Oregon; Medical Service, Veterans Affairs Medical Center (Nelson, Helfand), Portland, Oregon; Department of Family Practice, Virginia Commonwealth University (Woolf), Fairfax, Virginia; School of Nursing, The University of Maryland, Baltimore (Allan), Baltimore, Maryland.

The authors of this article are responsible for its contents, including any clinical or treatment recommendations. No statement in this article should be construed as an official position of the U.S. Agency for Healthcare Research and Quality or the U.S. Department of Health and Human Services.

Address correspondence to: Heidi D. Nelson MD, MPH, Oregon Health & Science University, Mail code BICC 504, 3181 SW Sam Jackson Park Road, Portland, Oregon 97201. E-mail: nelsonh@ohsu.edu.

Reprints are available from the AHRQ Web site ([www.preventiveservices.ahrq.gov](http://www.preventiveservices.ahrq.gov)), through the National Guideline Clearinghouse ([www.guideline.gov](http://www.guideline.gov)), or in print through the AHRQ Publications Clearinghouse (call 1-800-358-9295 or e-mail [ahrqpubs@ahrq.gov](mailto:ahrqpubs@ahrq.gov)).

The USPSTF recommendations based on this evidence review can be found in Screening for Osteoporosis in Postmenopausal Women: Recommendations and Rationale (which precedes this chapter), available on the AHRQ Web site and through the AHRQ Publications Clearinghouse.

This chapter first appeared as an article in *Ann Intern Med.* 2002;137(6):529-541.

women. Recent systematic reviews and guidelines disagree about which women should be screened and when.<sup>12-20</sup> This disagreement reflects, in part, gaps in the evidence. For example, most guidelines recommend using risk factors to select patients for bone density testing, but because of inadequate data there is no consensus on which risk factors to use.

As part of the U.S. Preventive Services Task Force (USPSTF) update of its 1996 recommendation,<sup>21</sup> we examined evidence on the benefits and harms of screening postmenopausal women for osteoporosis. Specifically, we addressed the role of risk factors in identifying high-risk women, techniques of bone density testing to identify fracture risks, effectiveness of treatment in reducing fracture risk, and harms of screening and treatment.

## Methods

Additional methods used for this review, including determination of the quality of studies,<sup>22</sup> are detailed in Appendix Tables 1, 2, and 3 and in a separate report.<sup>23</sup> The analytic framework and key questions are detailed in Appendix Figure 1. Relevant studies were identified from multiple searches of MEDLINE (1966 to May 2001), HealthSTAR (1975 to May 2001), and Cochrane databases; reference lists of systematic reviews; and experts. We also sent letters to manufacturers of bone density devices requesting additional information about the performance of their instruments, but we received no new data.

Two reviewers read each abstract to determine its eligibility. We included English-language abstracts that included original data about postmenopausal women and osteoporosis and addressed screening, or the effectiveness of risk factor assessment, bone density testing, or treatment. We considered screening to be the process of assessing postmenopausal women without known osteoporosis for risk of osteoporotic fractures by identification of risk factors, including low bone density. Postmenopausal women were those who had experienced surgical or natural menopause, regardless of age. Women with pre-existing atraumatic fractures were not considered in the screening population because they had confirmed

osteoporosis according to the World Health Organization definition.

For studies of prediction, we selected articles that reported the relationship between risk factor assessment methods or bone density tests and bone density, bone loss, or fractures. We reviewed studies of medications used for treatment, and present results for bisphosphonates. We focused on randomized controlled trials of therapies reporting radiographically verified, nontraumatic fracture outcomes, because fractures are a stronger measure of effectiveness than bone density. We excluded studies of primary prevention of osteoporosis, such as the role of nutrition, calcium consumption, and physical activity. We also excluded secondary causes of osteoporosis, such as corticosteroid use and certain chronic diseases, and studies that did not provide sufficient information to determine the method for selecting patients and for analyzing data. Investigators read the full-text versions of the retrieved papers and re-applied the initial eligibility criteria. To assess the internal validity of individual studies, we applied a set of criteria developed by the USPSTF (Appendix Table 1).<sup>22</sup>

In this paper, we highlight studies that are applicable to current practice standards, have high quality internal validity ratings, and are most generalizable to the U.S. population of postmenopausal women under consideration for screening. We created an outcomes table to summarize the number of hip and vertebral fractures prevented based on age-specific prevalence rates and treatment effects obtained from results of the reviewed studies. We conducted a sensitivity analysis to determine the influence of risk factors on the number needed to screen.

This research was funded by the Agency for Healthcare Research and Quality (AHRQ) under a contract to support the work of the USPSTF. Agency staff and Task Force members participated in the initial design of the study and reviewed interim analyses and the final manuscript. Additional reports were distributed for review to content experts and revised accordingly before preparation of this manuscript.<sup>23,24</sup>

## Results

### Studies of Screening

We identified no studies about the effectiveness of screening in reducing osteoporotic fractures. Without direct evidence from screening studies, recommendations about screening need to rely on evidence that risk factor assessment or bone density testing can adequately identify women who could ultimately benefit from treatment.

### Risk Factor Assessment

Hundreds of studies report associations between risk factors and low bone density and fractures in postmenopausal women.<sup>24</sup> The most comprehensive study of risk factors in a U.S. population is the Study of Osteoporotic Fractures (SOF), a good-quality prospective study of 9,516 women 65 years of age and older.<sup>25</sup> In this study, 14 clinical risk factors were identified as significant predictors of hip fracture in multivariable models (age; maternal hip fracture; no weight gain; height; poor self-rated health; hyperthyroidism; current use of benzodiazepines, anticonvulsants, or caffeine; not walking for exercise; lack of ambulation; inability to rise from a chair; poor scores on 2 measures of vision; high resting pulse; and any fracture since 50 years of age). The relative risk for hip fracture per decrease of 1 SD in calcaneal bone density was 1.6 (95% confidence interval [CI], 1.3-1.9). This was comparable to the magnitude of the relative risks of most of the other significant predictors in the model, which ranged from 1.2 to 2.0. Women with at least 5 of the 14 risk factors had increased rates of hip fractures compared with those who had 0 to 2 risk factors at all levels of calcaneal bone density.

To determine which risk factors could be important in women younger than 65, we reviewed 8 observational studies of risk factors and fractures of various types conducted in populations in which at least 50% of participants were younger than 65. Table 1 lists risk factors that were statistically significant predictors for fractures in multivariable models.<sup>26-33</sup> These results could not be quantitatively combined because risk factors were defined differently in each study.

Results of risk factor studies have been used to assess risk in individuals. We identified 10 cross-sectional studies that described methods of determining risk for low bone density for individual women based on selected clinical risk factors (Table 2).<sup>34-43</sup> The most common methodologic limitations of these studies are lack of validation and lack of generalizability because of small numbers of patients or nonrepresentative patients. We also identified 8 studies of clinical risk factors to determine fracture risk (Table 2).<sup>44-51</sup> None of these studies received a good rating for internal validity. Four studies evaluated hip fracture outcomes, 2 evaluated vertebral fractures, and 2 evaluated all types of fractures. These studies described the association of risk factors with fractures known to have occurred already (4 case-control studies), or how well they would predict fractures in the future (4 prospective cohort studies).

A recent study compared the performance of 5 clinical decision rules for bone density testing among 2,365 postmenopausal women 45 years of age or older who were enrolled in a community-based study of osteoporosis in Canada.<sup>52</sup> These rules included guidelines from the National Osteoporosis Foundation<sup>53</sup>; the Simple Calculated Osteoporosis Risk Estimation (SCORE) rule (age, weight, ethnicity, estrogen use, presence of rheumatoid arthritis, history of fractures)<sup>41</sup>; the Osteoporosis Risk Assessment Instrument (ORAI) (age, weight, current use of hormone replacement therapy)<sup>43</sup>; the Age, Body Size, No Estrogen rule,<sup>54</sup> and body weight criterion (weight <70 kg).<sup>38</sup> None of the decision rules had good discriminant performance. In this study, SCORE and ORAI had the highest area under the receiver-operating characteristic curves (0.80 and 0.79, respectively [sensitivity, 99.6 percent and 97.5 percent, and specificity, 17.9 percent and 27.8 percent respectively]). Details of how to use SCORE and ORAI are given in Table 2).

### Bone Density Tests

Several technologies are available to measure bone density,<sup>55-58</sup> although correlations among different bone density devices are low (0.35 to 0.60).<sup>59-79</sup> Dual-energy x-ray absorptiometry (DXA) is considered the gold standard because it is the most extensively validated test against fracture outcomes.

Table 1. Risk factors for fractures in women 50-65 years of age

Risk Factor	Relative Risk (95% confidence interval)	References
Age: per 2 years	1.11 (1.01-1.21)	26
per 5 years	1.94 (1.55-2.42)	27
Body Mass Index		
per increase of 10 kg/m <sup>2</sup>	0.58 (0.36-0.92)	27
≥25.6	0.7 (0.5-0.9) wrist; 1.6 (1.0-2.4) ankle	26
≥28.6	0.5 (0.4-0.7) wrist; 2.0 (1.3-3.1) ankle	26
low	1.1 (1.0-1.2)	29
Height: per 0.1 m	1.58 (1.18-2.12)	27
Mother with fracture	1.27 (1.16-1.40)	30
Grandmother with hip fracture	3.70 (1.55-8.85)	31
Hormone replacement therapy		
Current use	0.82 (0.74-0.91)	30
per 5 years use	0.5 (0.2-0.9)	28
>2 years use	0.44 (0.22-0.89)	32
Long history of use	0.70 (0.50-0.96)	33
African American	0.54 (0.41-0.72)	30
Diabetes mellitus	9.17 (3.38-24.92)	27
Chronic conditions	1.3 (1.1-1.5)	26
Disability pension	3.79 (2.15-6.68)	27
Long-term work disability	1.3 (1.1-1.6)	26
Self-rated health (fair/poor)	1.79 (1.52-2.11)	30
Moderate daily physical activity	0.61 (0.37-0.99)	32
Alcohol: ≥100 g/wk	1.70 (1.08-2.67)	33
Regular use	1.4 (1.3-4.4)	29
1 to 6 drinks/wk	0.85 (0.75-0.96)	30
Smoking		
Current	1.5 (1.3-1.5); 1.14 (1.00-1.30)	26, 30
Former	1.09 (1.00-1.19)	30
≥11 cigarettes/day	3.0 (1.9-4.6)	26
Unmarried	2.16 (1.28-3.64)	27
College education or higher	1.26 (1.16-1.38)	30
Age at menopause	0.94 (0.88-0.99)	32
Years since menopause		30
10 to 19	1.18 (1.01-1.38)	
20 to 29	1.31 (1.12-1.54)	
30	1.51 (1.26-1.81)	
Oophorectomy <45 years	3.64 (1.01-13.04)	33
5 or more children	2.5 (1.1-6.7)	29

When used in the same patients, DXA machines from different manufacturers differ in the proportion of patients diagnosed to have osteoporosis by 6% to 15%.<sup>80-85</sup> Published studies consistently show that the probability of receiving a diagnosis of osteoporosis depends on the choice of test and site.<sup>86-90</sup> One analytical study, for example, found that 6% of women older than 60 would receive a diagnosis of osteoporosis if DXA of the total hip were used as the only test, compared with 14% for DXA of the lumbar spine, 3% with quantitative ultrasonography, and 50% with quantitative computed tomography.<sup>87</sup>

The likelihood of receiving a diagnosis of osteoporosis also depends on the number of sites tested. Testing in the forearm, hip, spine, or heel generally identifies different groups of patients. For example, a physician cannot definitively say that a patient does not have osteoporosis on the basis of a forearm test alone. Conversely, although test results at any site are associated to some degree with fractures at other sites, a physician may not be able to assess whether a patient with a low T-score on a hand or forearm test has substantial bone loss at other sites.

A meta-analysis assessed 23 publications from 11 separate prospective cohort studies published before 1996.<sup>91</sup> Nearly all of the data were from women in their late 60s or older. No studies of ultrasonography were included. The meta-analysis indicated that DXA at the femoral neck predicted hip fracture better than measurements at other sites, and was comparable to forearm measurements for predicting fractures at other sites.<sup>92-94</sup> For bone density measurements at the femoral neck, the pooled relative risk per decrease of one SD in bone density was 2.6 (CI, 2.0-3.5). In direct comparisons, heel ultrasonography was slightly worse than but comparable to DXA of the hip in women older than 65 (Table 3).<sup>92,94-100</sup> For both tests, a result in the osteoporotic range is associated with an increased short-term probability of hip fracture. No data compare DXA and ultrasonography for prediction of fracture in women younger than 65.

The National Osteoporosis Risk Assessment study<sup>30</sup> recently evaluated the performance of peripheral densitometry in predicting fractures. This

prospective study of ambulatory postmenopausal women 50 years of age or older with no previous osteoporosis diagnoses recruited 200,160 participants from 4,236 primary care practices in 34 U.S. states. Women received baseline T-scores by measuring bone density at the heel (single-energy x-ray absorptiometry or quantitative ultrasonography), forearm (peripheral DXA), or finger (peripheral DXA). After 12 months of follow-up, women with T-scores less than or equal to -2.5 had an adjusted risk for all types of fractures that was 2.74 (CI, 2.40-3.13) times higher than women with normal baseline bone density. Results varied by type of test and site; those identified as osteoporotic by DXA had higher fracture rates. Tests were not compared with DXA of the femoral neck, and the study did not describe how tests performed by age group or risk category.

## Treatment

The U.S. Food and Drug Administration has approved hormone replacement therapy, bisphosphonates, raloxifene, and calcitonin for osteoporosis prevention and/or treatment. Our review of estrogen and selective estrogen receptor modulators is presented elsewhere.<sup>101</sup>

A recent meta-analysis<sup>102</sup> of 11 randomized trials<sup>103-113</sup> enrolling 12,855 women found that at least 5 mg of alendronate per day reduced vertebral fractures in 8 trials (relative risk, 0.52; CI, 0.43-0.65). Alendronate also reduced forearm fractures in 6 trials involving 3,723 participants (dosage  $\geq 10$  mg/d; weighted relative risk, 0.48; CI, 0.29-0.78), hip fractures in 11 trials involving 11,808 participants (dosage  $\geq 5$  mg/d; weighted relative risk, 0.63; CI, 0.43-0.92), and other nonvertebral fractures in 6 trials involving 3,723 participants (dosage 10 to 40 mg/d; weighted relative risk, 0.51; CI, 0.38-0.69). These trials included follow-up data ranging from 1 to 4 years; effect sizes for longer periods of use are not known. We evaluated data from these trials to determine whether women who have a similar overall risk for fracture but different bone densities derive a similar benefit from treatment. This question is clinically important because accepted criteria for initiating treatment are lacking.

Table 2. Studies of risk factors assessment

Author	Design	N	Validated	Risk Factors Included	Outcome	Performance	Quality Rating*
<b>Bone Density Outcomes</b>							
Slemenda, 1990 <sup>34</sup>	Cross-sectional	124	No	Age, height, weight, calcium intake, caffeine intake, alcohol and tobacco use, urinary markers of bone turnover.	Correct classification of high or low BMD (lowest third of subjects)	Midshaft radius: 68% low, 77% high. Lumbar spine: 61% low, 45% high. Femoral neck: 66% low, 53% high.	Poor
Falch, 1992 <sup>35</sup>	Cross-sectional	73	Yes	Low body weight, reduced renal phosphate reabsorption, smoking.	Bone loss	Sensitivity 36%, specificity 89%, PPV 74%.	Poor
Ribot, 1992 <sup>36</sup>	Cross-sectional	1565	No	Weight, menopause, duration of menopause.	Vertebral BMD < -2 SD	Sensitivity 73%, specificity 66%.	Fair
Elliot, 1993 <sup>37</sup>	Cross-sectional	320	Yes	Spine BMD: age, weight, smoking status, age at menarche. Femoral neck BMD: age, weight, family history, activity, smoking status.	Low lumbar spine and femoral neck BMD (lowest third of age matched normal range)	Lumbar spine: sensitivity 86%, specificity 32%. Femoral neck: sensitivity 89%, specificity 25%.	Fair
Michaelsson, 1996 <sup>38</sup>	Cross-sectional	175	No	Weight > 70kg.	Femoral neck BMD < -2.5 SD	Sensitivity 94%, specificity 36%, PPV 21%, NPV 97%.	Fair
Verhaar, 1998 <sup>39</sup>	Cross-sectional	61	No	1. Arm span-height difference of at least 3 cm. 2. Arm span-height difference, age above or below 70, and whether arm span was below or above 160 cm.	BMD ≤ -2.5 SD and vertebral fracture	Arm span only: sensitivity 58%, specificity 56%. Arm span, age, arm span length: sensitivity 81%, specificity 64%.	Poor
Ballard, 1998 <sup>40</sup>	Cross-sectional	1158	No	Age, age at menopause, height, weight, gravidity, parity, current use of steroids, current HRT.	Osteoporosis of femoral neck and/or spine	ROC area 0.73.	Fair
Lydick, 1998 1998 <sup>41</sup>	Cross-sectional	1279	Yes	SCORE = age (3 times first digit of age in years), weight (- 1 times weight in pounds divided by 10 and truncated to integer), race (5 if not black), estrogen use (1 if never used), rheumatoid arthritis (4 if present), history of fractures (4 for each fracture after age 45 of wrist, hip, or rib, to a maximum of 12).	Femoral neck BMD ≤ -2 SD	Sensitivity 89%, specificity 50%; ROC area 0.81 using a score of 6, or greater.	Good

Continued on page 225

Table 2. Studies of risk factors assessment (continued)

Author	Design	N	Validated	Risk Factors Included	Outcome	Performance	Quality Rating*
Goemaere, 1999 <sup>42</sup>	Cross-sectional	300	No	18-item questionnaire of risk factors for osteoporosis (race, height loss, age, weight, smoking, coffee, alcohol, dairy product use, activity, family history, existence of comorbidities, history of wrist fracture, menopause before 45 years, corticosteroid use)	Lumbar spine, femoral neck, and hip BMD	Lumbar spine: ROC area 0.66; Femoral neck: ROC area 0.69; Hip: ROC area 0.76.	Fair
Cadarette, 2000 <sup>43</sup>	Cross-sectional	926	Yes	ORAI = age (15 points if $\geq 75$ , 9 if 65-74, 5 if 55-64), weight (9 if $< 60$ kg, 3 if 60-69.9 kg), current use of HRT (2 if not currently using).	Hip or lumbar spine BMD $\leq -2.5$	Sensitivity 95%, specificity 41% using a score of $\geq 9$ .	Good
<b>Fracture Outcomes</b>							
Kleerekoper, 1989 <sup>44</sup>	Case-control	663	No	Model 1; total months of lactation, family history of osteoporosis, years post menopause, weight. Model 2: breast fed, surgical menopause, age at menarche, age, smoking status.	Vertebral fractures	Model 1: ROC area (SE) 0.55 (0.07); sensitivity 56%; specificity 54%. Model 2: ROC 0.51 (0.042); sensitivity 63% specificity 39%.	Fair
van Hemert, 1990 <sup>45</sup>	Cohort	1014	No	Age, metacarpal cortical area, relative cortical area, BMI, height, diameter of forearm, diameter of knee, age at menarche, age at menopause, smoking, number of children, period of lactation.	Osteoporotic fractures	Sensitivity 48%, specificity 82%.	Fair
Cooper, 1991 <sup>46</sup>	Case-control	1012	No	Age, height, vertebral fracture after age 45, age of last menstrual period, number of children, ever use oral corticosteroid.	Vertebral fractures	Sensitivity 51%, specificity 69%.	Fair
Wolinsky and Fitzgerald 1994 <sup>47</sup>	Cohort	368	No	White race, female gender, living in southern U.S., age, having been hospitalized in the previous year, previous fall, body mass.	Hip fractures	ROC 0.71; sensitivity 64.7%, specificity 65.7%.	Fair

Continued on page 226

Table 2. Studies of risk factors assessment (continued)

Author	Design	N	Validated	Risk Factors Included	Outcome	Performance	Quality Rating*
Johnell, 1995 <sup>48</sup>	Case-control	5618	No	Late menarche, poor mental score, low BMI, low physical activity, low exposure to sunlight, and low consumption of calcium and tea.	Hip fractures	Sensitivity 55%, specificity 65%.	Fair
Ranstam, 1996 <sup>49</sup>	Case-control	7474	No	Mental-functional risk score: knowledge of the day of week, knowledge of age, ability to wash, ability to dress.	Hip fractures	A less than perfect score had a sensitivity 46%, specificity 79%.	Fair
Tromp, 1998 <sup>50</sup>	Cohort	1469	No	Female gender, living alone, past fractures, inactivity, height, use of analgesics.	Probability of fractures	No predictors = 0%; 4 predictors = 12.9%	Fair
Burger, 1999 <sup>51</sup>	Cohort	5208	No	Model with BMD: age, gender, height, use of a walking aid, current smoking, BMD of femoral neck. Model without BMD: age, gender, height, use of a walking aid, current smoking, weight.	Hip fractures	Model with BMD: ROC area 0.88; sensitivity 70%, specificity 84%. Model without BMD: ROC area 0.83; sensitivity 70%, specificity 83%.	Fair

\*Based on criteria developed by the U.S. Preventive Services Task Force (22).

**Note:** BMD indicates bone mineral density; BMI, body mass index; CI, confidence interval; HRT, hormone replacement therapy; NPV, negative predictive value; PPV, positive predictive value; ROC, receiver operating characteristic (values  $\geq 0.80$  are usually required to consider a test to be effective); RR, relative risk; SE, standard error.



The Fracture Intervention Trial (FIT) of alendronate was conducted with 2 groups of participants and provides some information about levels of risk. One group (FIT-I) included a higher-risk sample of 2,027 women who had T-scores of -1.6 or lower and pre-existing vertebral fractures.<sup>104</sup> The 3-year risk for hip fracture was 2.2% in the placebo group and 1.1% in the alendronate group (relative hazard, 0.49; CI, 0.23-0.99), and the 3-year risk for any clinical fracture was 18.2% in the placebo group and 13.6% in the alendronate group (relative hazard, 0.72; CI, 0.58-0.90). A second study from FIT (FIT-II) included a lower-risk sample of 4,432 women who also had T-scores of -1.6 or lower, but did not have pre-existing vertebral fractures.<sup>114</sup> The 4-year incidences of hip fracture (1.1%) and any clinical fractures (14.1%) in the placebo group were lower than those observed in the FIT-I placebo group. In FIT-II, only the subgroup of treated patients who had T-scores lower than -2.5 (n = 1,627) had a significant risk reduction for all clinical fractures, from 19.6% to 13.1% (relative risk, 0.64; CI, 0.50-0.82). No reduction in risk for fractures was seen in patients who had T-scores between -1.6 and -2.5.

The results from FIT suggest that women with more risk factors for fracture relating to bone structure and integrity, such as age, very low bone density, or pre-existing vertebral fractures, derive the greatest absolute benefit from treatment. However, FIT did not examine other nonskeletal risk factors, such as psychomotor impairment, poor gait, and other factors that increase the risk for falling. The effect of some of these risk factors on the benefit of treatment was examined in a randomized trial of another bisphosphonate, risedronate.<sup>115</sup> Risedronate had no effect on hip fracture rates among women 80 years of age or older who had one or more risk factors for falls but who did not necessarily have low bone density. In the same report, in women 70 to 79 years of age with severe osteoporosis (T score < -3), risedronate reduced hip fractures by 40% (relative risk, 0.6; CI, 0.4-0.9; number needed to treat for benefit, 77).

Trial results are not applicable to a screening program unless the trials included patients who

would be identified by screening the general population. We examined recruitment and eligibility characteristics of 10 of the 11 published randomized trials of alendronate to assess whether selection biases or other biases might have affected their generalizability (Table 4).<sup>103-112</sup> Overall, the trials included relatively healthy women with low bone density who were not using estrogen. Except for participants in 2 trials involving women who had recently gone through menopause and were not osteoporotic, most participants were older than 65.

The FIT-II is the largest study and provided the most detailed description of recruitment and results.<sup>107</sup> In FIT-II, researchers recruited the sample of 4,432 women by mailing a query to more than 1 million women selected from the general population in 11 cities. Women who had medical problems (for example, dyspepsia) or who used estrogen were excluded. Fifty-four thousand women (approximately 5.4%) responded by telephone; of these, 26,137 (52%) had a screening visit. A higher than expected proportion of these (65%) had sufficiently low bone density to enroll in the study. Of this 65%, 57% were classified as “ineligible, did not wish to continue, or screened after recruitment to this arm.” It is not clear from this description how many patients did not meet the eligibility criteria. In addition, an unspecified number of patients (up to 28,000) were found to be ineligible at the initial stage of recruitment. The demographic characteristics of eligible and screened but excluded participants were not reported. None of the other randomized trials disclosed any details of how their samples were recruited or how many respondents were found to be ineligible before randomization.

In other clinical areas, the results of industry-sponsored trials were significantly more favorable to newer therapies than trials funded by nonprofit organizations.<sup>116,117</sup> Because all 11 trials of alendronate were funded wholly or in part by the manufacturer, we were unable to assess the influence of sponsorship on effect size. If effectiveness of treatments is less than estimated in these trials, the efficiency of screening to identify candidates for treatment will be reduced and the number needed to screen for benefit will increase.

**Table 3. Prospective studies of DXA and ultrasound reporting hip fractures**

Cohort	Population	Age range	Followup (years)	N	Probability of hip fracture	Probability of hip fracture*			
						DXA of the hip		QUS of the heel	
						“low risk”	“high risk”	“low risk”	“high risk”
Study of Osteoporotic fractures (SOF) <sup>92,94-96</sup>	Community-dwelling white women from 4 areas in the U.S. recruited from lists	≥65	1.8-2.9	5236	0.009	0.005	0.023	0.006	0.018
		65-79	2.9					0.006	0.23
		≥80	2.9						
		65-69	1.8	2371	0.003	0.0028	0.005		
		70-74	1.8	3013	0.0076	0.0005	0.016		
		75-79	1.8	1728	0.0007	0.0003	0.019		
		80-84	1.8	731	0.018	0.0007	0.049		
		≥85	1.8	291	0.024	0.014	0.028		
Epidemiologie de L’Osteoporose (EPIDOS) <sup>97-100</sup>	Women from 5 cities in France recruited from voting lists and health insurance companies.	≥75	2	5656	0.02	0.033	0.008	0.012	0.029
		<80	2	3982	0.013	0.002	0.025		
		≥80	2	3616	0.028	0.006	0.04		

\*Probability of hip fracture if bone density was classified as high or low risk.

**Note:** DXA indicates Dual energy x-ray absorptiometry; QUS, quantitative ultrasound.

## Harms

Several potential harms are associated with screening and treatment. A test result indicating osteoporosis could produce anxiety and perceived vulnerability<sup>118</sup> that may be unwarranted. On a quality-of-life questionnaire, women with osteoporosis voiced significantly more fears than women who had normal bone density.<sup>119</sup> Some women may be falsely reassured if abnormal results from last year’s DXA appear “improved” on this year’s normal calcaneal ultrasonogram. The potential time, effort, expense, and radiation exposure of repeated scans over a lifetime have not yet been determined.

Potential harms may also arise from inaccuracies and misinterpretations of bone density tests. The variation among techniques, along with the lack of methods to integrate bone density results with clinical predictors, makes it difficult for clinicians to provide accurate information to patients about test results. In 1 study, physicians found densitometry

reports confusing, and were not confident that their interpretations of T-scores were accurate.<sup>120</sup> False-positive results could lead to inappropriate treatment, and false-negative results could lead to missed treatment opportunities.

Harms of treatment depend on the medication used. Overall, gastrointestinal side effects occur in approximately 25% of patients taking alendronate, but in controlled trials these rates were usually not significantly higher than those for placebo. High rates of serious gastrointestinal side effects have been observed among Medicare enrollees taking alendronate.<sup>121</sup> The long-term adverse effects of alendronate are unknown.

Costs of screening vary with technique, and average 2000 Medicare reimbursement rates were \$133 for DXA and \$34 for ultrasonography.<sup>122</sup> Abnormal results on ultrasonography may require a confirmatory DXA before treatment because clinical trials are based on entry criteria using DXA. Most women would require repeated tests over several

Table 4. Randomized controlled trials of alendronate with fracture outcomes

Author	Duration (years)	Age (years)	Population	Exclusion Criteria*	Lost to Followup	Rating†
Adami, 1995 <sup>103</sup>	2	48-76	9 Italian Centers, T-score < -2 (0.67g/cm <sup>2</sup> ); 5% vertebral fractures.	Narrow	32/211(15.2%)	Fair to Good
Black, 1996 <sup>104</sup>	3	55-81	11 U.S. cities, BMD <0.68 g/cm <sup>2</sup> ; no previous vertebral fractures.	Broad (medical illness, dyspepsia, etc)	81/2,027 (4%)	Good
Bone, 1997 <sup>105</sup>	2	>60	15 U.S. sites, BMD <0.84 g/cm <sup>2</sup> ; average 20 yrs since menopause; 30.7% vertebral fractures.	Broad (medical illness, NSAIDs, GI drugs)	19/359 (5.3%)	Fair to Good
Chesnut, 1995 <sup>106</sup>	2	42-75 (avg. 63)	7 centers, spine BMD <0.88, average hip BMD 0.7; ≥ 5 years since menopause.	Broad	26/157 (16.6%)	Fair
Cummings, 1998 <sup>107</sup>	4	55-81	11 U.S. cities, BMD <0.68 g/cm <sup>2</sup> (ave. 0.59); no previous vertebral fractures.	Broad (medical illness, dyspepsia)	179/4,432 (4%)	Good
Greenspan, 1998 <sup>108</sup>	2.5	>65	1 Boston center, no BMD entry criteria.	Narrow ("good health")	33/120 (27.5%)	Fair
Hosking, 1998 <sup>109</sup>	4	45-59	4 centers, BMD > 0.8 g/cm <sup>2</sup> ; <10% prevalent vertebral fractures.	Narrow ("good health")	287/1,499 (19.1%)	Fair
Liberman, 1995 <sup>110</sup>	3	45-80	2 multicenter trials, T-score < -2.5; 21% prevalent vertebral	Narrow ("good health")	170/994 (17.1%)	Good
McClung, 1998 <sup>111</sup>	3	40-59	15 centers, T-score < -2; 6-36 months since menopause; no previous vertebral fractures.	Narrow ("good health", estrogen use)	31% at 3 years	Fair
Pols, 1999 <sup>112</sup>	1	40-82	153 centers, T-score <-2.8.	Narrow ("good health")	211/1,908 (11.1%)	Fair

\*In general, "narrow" criteria excluded estrogen users and patients with illnesses affecting bone metabolism.

†Based on criteria developed by the U.S. Preventive Services Task Force.<sup>22</sup>

years before receiving a diagnosis of osteoporosis and leaving the screening pool. Treatment costs also vary; alendronate currently costs approximately \$3 per daily dose.

## Screening Strategies

To estimate the effect of screening 10,000 postmenopausal women for osteoporosis on reducing hip and vertebral fractures, we created an outcomes table based on assumptions from the

reviewed studies (Table 5). These estimates include age-specific prevalence rates expressed in 5-year age intervals<sup>123</sup> and treatment effects based on trial results (risk reduction, 37% for hip fracture and 50% for vertebral fracture).<sup>102,104,115,124</sup> We estimated an adherence rate of 70% based on reports of adherence and side effects from treatment trials, assuming less optimal compliance in the general population.

When the assumptions in Table 5 are used, if 10,000 women 65 to 69 years of age underwent

bone densitometry (DXA of the femoral neck), 1,200 would be identified as high-risk (T-score  $\leq$  -2.5). If these women were offered treatment that resulted in a 37% reduction in hip fracture risk, and a 50% reduction in vertebral fracture risk, and 70% adhered to therapy, then 14 hip fractures and 40 vertebral fractures would be prevented over a 5-year period. The number of women in this age group needed to screen to prevent 1 hip fracture in 5 years would be 731, and the number of women with low bone density needed to treat for benefit would be 88. The number needed to screen to prevent 1 vertebral fracture would be 248, and the number needed to treat for benefit would be 30. Treatment has significant costs and potential harms; when the number-needed-to-screen for benefit is high, the balance of benefits and harms may become unfavorable. These numbers become more favorable in older persons because the prevalence of osteoporosis increases steadily with age.

There is interest in whether risk assessment can be used to select patients for bone densitometry, which is costly. Our literature review indicated that the prevalence of osteoporosis, the predictability of densitometry, and the effectiveness of treatment might be lower for younger than for older postmenopausal women. To determine whether it is useful to consider clinical risk factors when screening younger postmenopausal women, we also included risk estimates for clinical risk factors in a sensitivity analysis. Our review of observational studies with younger postmenopausal women indicated that 3 consistent predictors of fracture are increasing age, low weight or body mass index, and nonuse of hormone replacement therapy (defined by current use, ever use, or certain durations of use). These 3 variables are also used in ORAI to identify women with low bone density<sup>43</sup> and were the variables most strongly associated with low bone density in a study enrolling mostly younger postmenopausal women in the United States.<sup>125</sup> On the basis of these studies, we estimated that 1 of these risk factors increases the probability of having osteoporosis by up to 100% and increases the risk for fracture by 70% (relative risk, 1.7).

For the younger age groups, the presence of clinical risk factors influences the outcomes. For

example, only 5 hip fractures are prevented over 5 years when all women 60 to 64 years of age are screened; however, 9 hip fractures are prevented if women have a factor that increases fracture risk by 70%. For women 60 to 64 years of age who have such a risk factor, the number needed to screen is 1,092 and the number needed to treat for benefit is 72 to prevent 1 hip fracture. These numbers approach those of women 65 to 69 years of age (Figure 1).

## Discussion

Although many studies have been published about osteoporosis in postmenopausal women, no trials have evaluated the effectiveness of screening; therefore, no direct evidence that screening improves outcomes is available. Instruments developed to assess clinical risk factors for low bone density or fractures generally have moderate to high sensitivity and low specificity. Many have not been validated, and none have been widely tested in a practice setting. Among different bone density tests measured at various sites, bone density measured by DXA at the femoral neck is the best predictor of hip fracture and is comparable to forearm measurements for predicting fractures at other sites. Heel ultrasonography and other peripheral bone density tests, however, can also predict short-term fracture risk. Bisphosphonates decrease fracture risk by approximately 40% to 50% in women with low bone density.

Support for population screening would be based on evidence that the prevalences of osteoporosis and fractures increase with age, that the short-term risk for fracture can be estimated by bone density tests and risk factors, and that the fracture risk among women with low bone density can be significantly reduced with treatment. We applied these data to generate an outcomes table of screening strategies that provide estimates of the numbers of women needed to screen and treat to prevent fractures. Age-based screening is supported by prevalence data, that is, the number needed to screen to prevent fractures decreases sharply as age and prevalence increase. Use of risk factors, particularly increasing age, low weight, and nonuse of estrogen replacement, to

**Table 5. Screening for osteoporosis in 10,000 postmenopausal women: hip and vertebral fracture outcomes by 5-year age intervals**

Variable	Age Group					
	50-54 y	55-59 y	60-64 y	65-69 y	70-74 y	75-79 y
<i>Base Case Assumptions*</i>						
Prevalence of osteoporosis	0.0305	0.0445	0.065	0.120	0.2025	0.285
Relative risk for hip fracture with treatment	0.63	0.63	0.63	0.63	0.63	0.63
Relative risk for vertebral fracture with treatment	0.52	0.52	0.52	0.52	0.52	0.52
Adherence to treatment	0.7	0.7	0.7	0.7	0.7	0.7
<i>Results</i>						
Identified as high-risk (osteoporotic)	305	445	650	1,200	2,025	2,850
Hip fractures prevented	1	2	5	14	39	70
NNS to prevent 1 hip fracture	7,446	4,338	1,856	731	254	143
NNT to prevent 1 hip fracture	227	193	121	88	51	41
Vertebral fractures prevented	5	7	22	40	95	134
NNS to prevent 1 vertebral fracture	1,952	1,338	458	248	105	75
NNT to prevent 1 vertebral fracture	60	60	30	30	21	21

\*Estimates for assumptions include age-specific prevalence rates for osteoporosis and probabilities of fractures; relative risk of 0.63 for hip fractures and 0.52 for vertebral fractures with treatment; treatment adherence of 0.7 (see text).

**Note:** Formulas for calculations are described in Appendix Table 2.

NNS indicates number needed to screen for benefit; NNT, number needed to treat.

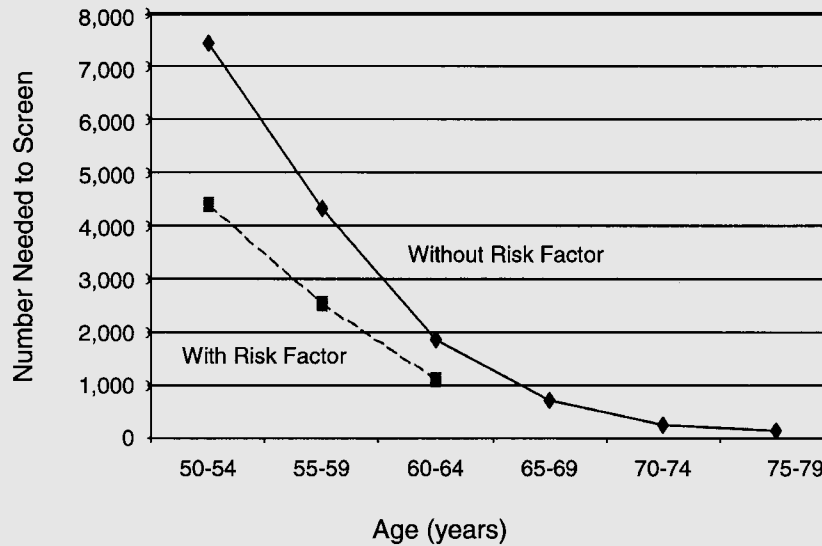
screen younger women may identify additional high-risk women and provide absolute benefit similar that yielded by screening older women without risk factors. These findings relate to screening asymptomatic women only and do not apply to women considered for testing because of pre-existing or new fractures or the presence of secondary causes of osteoporosis.

Our approach has several limitations, however, and results from a well-designed trial of screening strategies should supersede our estimations which are based on indirect evidence. The estimates in the outcomes table are limited by assumptions that are arguable or highly variable by patient and setting. Our assumptions of treatment effect and adherence are especially optimistic and reflect results of clinical trials, not clinical practice. We chose a 5-year time horizon based on the short-term predictability of bone density tests as well as on results of short-term

treatment trials. Long-term outcomes may provide a more accurate estimate of benefits. Also, we cannot exclude the possibility that harms outweigh benefits, particularly since the long-term effects of bisphosphonates are not yet known.

The evidence on which we based our conclusions is also limited. Overall, evidence is stronger for women older than 65 than for younger women because more research has been done in older age groups. Bone loss in the perimenopausal and early postmenopausal years is important to long-term bone health, but few published studies address screening and treatment for younger postmenopausal women. Fracture risk is determined not only by bone density, but also by bone characteristics that are difficult to measure in a clinical setting, such as bone structure and morphologic characteristics. No bone density studies or treatment trials include large numbers of non-white women, and it may be

Figure 1. Number needed to screen to prevent 1 hip fracture in 5 years



The number needed to screen decreases with advancing age and for women younger than 65 with at least 1 risk factor.

difficult to provide ethnicity-specific screening recommendations in the absence of more evidence.

The role of clinical risk factors is still unclear. Although many risk factors are associated with osteoporosis and fractures, how to use them to select women to test or treat is uncertain. The risk factors identified by our literature review and used in the outcomes table are only best estimates. Other risk factors may prove to be equally predictive when used for screening purposes. Further validation of existing risk assessment instruments or development of new ones would be useful. Few studies have evaluated the effect of altering modifiable risk factors, such as smoking cessation, strength and balance training, and visual correction. These interventions may prove to be as effective as drug therapy in preventing fractures, and may also be important effect modifiers that would alter the effectiveness of treatments.

Peripheral bone density tests have not been extensively studied for screening. Results from National Osteoporosis Risk Assessment Study<sup>30</sup> indicate that peripheral tests can predict short-term

fracture rates in a primary care population that would be targeted for screening. Most treatment trials use DXA of the hip as an entry criterion, and results may not apply to women whose diagnosis is determined by other tests. A sequential approach, in which women with low values on a peripheral test are subsequently tested by DXA of the hip to determine treatment needs, may be useful, although this approach has not been evaluated. Further research is needed to define the appropriate use of these technologies.

How frequently to screen has also not been specifically studied, but data are needed to determine optimal screening intervals. Estimations can be made based on the age-specific prevalence of osteoporosis and the precision of bone density tests. Less frequent testing for younger postmenopausal women when prevalence is lower (for example, 5-year intervals) and more frequent testing for older women (for example, 2-year intervals) might be reasonable, but further research is needed. Screening intervals of less than 2 years seem unwarranted because the precision error of densitometry would likely exceed the estimated bone loss in such a brief

period.<sup>126</sup> After a woman is screened and determined to have osteoporosis, future screening with bone density testing would be unnecessary.

Osteoporotic fractures present an enormous health burden on an expanding elderly population. Further research to more accurately determine the benefits and harms of screening is of paramount importance.

## Acknowledgements

The authors thank Peggy Nygren, MA; Nancy Carney, PhD; Kathryn Pyle Krages, AMLS, MA; Benjamin Chan, MS; and the reviewers of the full evidence report for their contributions to this project.

## References

- Melton LJ III, Kan SH, Frye MA, Wahner HW, O'Fallon WM, Riggs BL. Epidemiology of vertebral fractures in women. *Am J Epidemiol*. 1989;129(5):1000-1011.
- Barrett JA, Baron JA, Karagas MR, Beach ML. Fracture risk in the U.S. Medicare population. *J Clin Epidemiol*. 1999;52(3):243-249.
- White BL, Fisher WD, Laurin CA. Rate of mortality for elderly patients after fracture of hip in the 1980s. *J Bone Joint Surg*. 1987;69A:1335-1340.
- Cauley J, Thompson D, Ensrud K, Scott J, Black D. Risk of mortality following clinical fractures. *Osteoporos Intern*. 2000;11(7):556-561.
- Melton LJ III. Epidemiology of spinal osteoporosis. *Spine*. 1997;22(suppl 24):2S-11S.
- Consensus Development Conference. Prophylaxis and treatment of osteoporosis. *Am J Med*. 1991;90:107-110.
- Consensus Development Conference. Diagnosis, prophylaxis and treatment of osteoporosis. *Am J Med*. 1993;94:646-650.
- World Health Organization. *Assessment of Fracture Risk and Its Application to Screening for Postmenopausal Osteoporosis*. WHO Technical Report Series 843. Geneva: World Health Organization; 1994.
- Kanis JA. Assessment of fracture risk and its application to screening for postmenopausal osteoporosis: synopsis of a WHO report. WHO Study Group. *Osteoporos Int*. 1994;4(6):368-381.
- Melton LJ III. How many women have osteoporosis now? *J Bone Miner Res*. 1995;10(2):175-177.
- Heaney RP. Bone mass, bone loss, and osteoporosis prophylaxis. [Editorial] *Ann Intern Med*. 1998;128(4):313-314.
- Bone density measurement-a systematic review. Swedish Council on Technology Assessment in Health Care. *J Intern Med Suppl*. 1997;739:1-60.
- Hailey D, Sampietro-Colom L, Marshall D. *INAHTA Project on the Effectiveness of Bone Density Measurement and Associated Treatments for Prevention of Fractures: Statement of Findings*. Edmonton, Alberta, Canada: Alberta Heritage Foundation for Medical Research; 1996.
- Green CJ, Bassett K, Foerster V. *Bone Mineral Density Testing: Does the Evidence Support its Selective Use in Well Women?* British Columbia, Canada: British Columbia Office of Health Technology Assessment; 1997. Report no. 97:2T.
- National Osteoporosis Foundation. Osteoporosis: review of the evidence for prevention, diagnosis, and treatment and cost-effectiveness analysis. *Osteoporos Int*. 1998; 8(suppl 4):S7-S88.
- Homik J, Hailey D. *Quantitative Ultrasound for Bone Density Measurement*. Edmonton, Alberta, Canada: Alberta Heritage Foundation for Medical Research; 1998. Report No.: Health Technology Assessment 11.
- Homik J, Hailey D. *Selective Testing with Bone Density Measurement*. Edmonton, Alberta, Canada: Alberta Heritage Foundation for Medical Research; 1999. Report No.: Health Technology Brief 4.
- Royal College of Physicians. *Osteoporosis: Clinical Guidelines for Prevention and Treatment*. London: Royal College of Physicians of London; 1999.
- Blue Cross Blue Shield Association. *Ultrasonography of the Heel for Diagnostic Osteoporosis and Selecting Patients for Pharmacologic Treatment*. Chicago: Blue Cross and Blue Shield Assoc; 1999.
- Siebzehner MI. Consensus statement on prevention and treatment of osteoporosis. *Isr Med Assoc J*. 2000;2(5):397-401.
- U.S. Preventive Services Task Force. *Guide to Clinical Preventive Services*. 2nd ed. Washington, DC: Office of Disease Prevention and Health Promotion; 1996.

22. Harris RP, Helfand M, Woolf SH, et al. Current methods of the U.S. Preventive Services Task Force: a review of the process. *Am J Prev Med.* 2001;20(suppl 3): 21-35.
23. Nelson H, Helfand M, Woolf S, Allan J. *Screening for Postmenopausal Osteoporosis.* Systematic Evidence Review No. 17 (Prepared by the Oregon Health & Science University Evidence-based Practice Center under Contract No. 290-97-0018). Rockville, MD: Agency for Healthcare Research and Quality. September 2002. (Available on the AHRQ Web site at: [www.ahrq.gov/clinic/serfiles.htm](http://www.ahrq.gov/clinic/serfiles.htm)).
24. Nelson H, Morris CD, Kraemer D, et al. *Osteoporosis in Postmenopausal Women: Diagnosis and Monitoring.* Rockville, MD: Agency for Healthcare Research and Quality; 2002.
25. Cummings SR, Nevitt MC, Browner WS, et al. Risk factors for hip fracture in white women. Study of Osteoporotic Fractures Research Group. *N Engl J Med.* 1995;332(12):767-773.
26. Honkanen R, Tuppurainen M, Kroger H, Alhava E, Saarikoski S. Relationships between risk factors and fractures differ by type of fracture: a population-based study of 12,192 perimenopausal women. *Osteoporos Int.* 1998;8(1):25-31.
27. Meyer HE, Tverdal A, Falch JA. Risk factors for hip fracture in middle-aged Norwegian women and men. *Am J Epidemiol.* 1993;137(11):1203-1211.
28. Kreiger N, Kelsey JL, Holford TR, O'Connor T. An epidemiologic study of hip fracture in postmenopausal women. *Am J Epidemiol.* 1982;116(1):141-148.
29. Fujiwara S, Kasagi F, Yamada M, Kodama K. Risk factors for hip fracture in a Japanese cohort. *J Bone Miner Res.* 1997;12(7):998-1004.
30. Siris ES, Miller PD, Barrett-Conner E, et al. Identification and fracture outcomes of undiagnosed low bone mineral density in postmenopausal women: results from the National Osteoporosis Risk Assessment. *JAMA.* 2001;286(22):2815-2822.
31. Torgerson DJ, Campbell MK, Thomas RE, Reid DM. Prediction of perimenopausal fractures by bone mineral density and other risk factors. *J Bone Miner Res.* 1996;11(2):293-297.
32. Mallmin H, Ljunghall S, Persson I, Bergstrom R. Risk factors for fractures of the distal forearm: a population-based case-control study. *Osteoporos Int.* 1994;4(6):298-304.
33. Tuppurainen M, Kroger H, Honkanen R, et al. Risks of perimenopausal fractures: a prospective population-based study. *Acta Obstet Gynecol Scand.* 1995;74(8):624-628.
34. Slemenda CW, Hui SL, Longcope C, Wellman H, Johnston CC Jr. Predictors of bone mass in perimenopausal women: a prospective study of clinical data using photon absorptiometry. *Ann Intern Med.* 1990;112(2):96-101.
35. Falch JA, Sandvik L, Van Beresteijn EC. Development and evaluation of an index to predict early postmenopausal bone loss. *Bone.* 1992;13(4):337-341.
36. Ribot C, Pouilles JM, Bonneau M, Tremollieres F. Assessment of the risk of post-menopausal osteoporosis using clinical factors. *Clin Endocrinol (Oxf).* 1992;36(3):225-228.
37. Elliot JR, Gilchrist NL, Wells JE, Ayling E, Turner J, Sainsbury R. Historical assessment of risk factors in screening for osteopenia in a normal Caucasian population. *Aust N Z J Med.* 1993;23(5):458-462.
38. Michaelsson K, Bergstrom R, Mallmin H, Holmberg L, Wolk A, Ljunghall S. Screening for osteopenia and osteoporosis: selection by body composition. *Osteoporos Int.* 1996;6(2):120-126.
39. Verhaar HJ, Koele JJ, Neijzen T, Dessens JA, Duursma SA. Are arm span measurements useful in the prediction of osteoporosis in postmenopausal women? *Osteoporos Int.* 1998;8(2):174-176.
40. Ballard PA, Purdie DW, Langton CM, Steel SA, Mussurakis S. Prevalence of osteoporosis and related risk factors in UK women in the seventh decade: osteoporosis case finding by clinical referral criteria or predictive model? *Osteoporos Int.* 1998;8(6):535-539.
41. Lydick E, Cook K, Turpin J, Melton M, Stine R, Byrnes C. Development and validation of a simple questionnaire to facilitate identification of women likely to have low bone density. *Am J Manag Care.* 1998;4(1):37-48.
42. Goemaere S, Zegels B, Toye K, et al. Limited clinical utility of a self-evaluating risk assessment scale for postmenopausal osteoporosis: lack of predictive value of lifestyle-related factors. *Calcif Tissue Int.* 1999;65:354-358.
43. Cadarette SM, Jaglal SB, Kreiger N, McIsaac WJ, Darlington GA, Tu JV. Development and validation of the Osteoporosis Risk Assessment Instrument to facilitate selection of women for bone densitometry. *CMAJ.* 2000;162:1289-1294.



44. Kleerekoper M, Peterson E, Nelson D, et al. Identification of women at risk for developing postmenopausal osteoporosis with vertebral fractures: role of history and single photon absorptiometry. *Bone Miner*. 1989;7(2):171-186.
45. van Hemert AM, Vandenbroucke JP, Birkenhager JC, Valkenburg HA. Prediction of osteoporotic fractures in the general population by a fracture risk score: a 9-year follow-up among middle-aged women. *Am J Epidemiol*. 1990;132(1):123-135.
46. Cooper C, Shah S, Hand DJ, et al. Screening for vertebral osteoporosis using individual risk factors. *Osteoporos Int*. 1991;2:48-53.
47. Wolinsky FD, Fitzgerald JF. The risk of hip fracture among noninstitutionalized older adults. *J Gerontol*. 1994;49(4):S165-175.
48. Johnell O, Gullberg B, Kanis JA, et al. Risk factors for hip fracture in European women: the MEDOS Study. Mediterranean Osteoporosis Study. *J Bone Miner Res*. 1995;10(11):1802-1815.
49. Ranstam J, Elffors L, Kanis JA. A mental-functional risk score for prediction of hip fracture. *Age Ageing*. 1996;25(6):439-442.
50. Tromp AM, Smit JH, Deeg DJ, Bouter LM, Lips P. Predictors for falls and fractures in the Longitudinal Aging Study Amsterdam. *J Bone Miner Res*. 1998;13(12):1932-1939.
51. Burger H, de Laet CE, Weel AE, Hofman A, Pols HA. Added value of bone mineral density in hip fracture risk scores. *Bone*. 1999;25(3):369-374.
52. Cadarette S, Jaglal S, Murray T, Mclac W, Joseph L, Brown J. Evaluation of decision rules for referring women for bone densitometry by dual-energy x-ray absorptiometry. *JAMA*. 2001;286(1):57-63.
53. National Osteoporosis Foundation. *Physician's Guide to Prevention and Treatment of Osteoporosis*. Washington, DC: Excerpta Medica, Inc.; 1999.
54. Weinstein L, Ullery B. Identification of at-risk women for osteoporosis screening. *Am J Obstet Gynecol*. 2000;183:547-549.
55. Blake GM, Gluer CC, Fogelman I. Bone densitometry: current status and future prospects. *Br J Radiol*. 1997;70(Spec No):S177-186.
56. Blake GM, Fogelman I. Applications of bone densitometry for osteoporosis. *Endocrinol Metab Clin North Am*. 1998;27(2):267-288.
57. Genant HK, Engelke K, Fuerst T, et al. Noninvasive assessment of bone mineral and structure: state of the art. *J Bone Miner Res*. 1996;11(6):707-730.
58. Jergas M, Genant HK. Spinal and femoral DXA for the assessment of spinal osteoporosis. *Calcif Tissue Int*. 1997;61(5):351-357.
59. Agren M, Karellas A, Leahey D, Marks S, Baran D. Ultrasound attenuation of the calcaneus: a sensitive and specific discriminator of osteopenia in postmenopausal women. *Calcif Tissue Int*. 1991;48(4):240-244.
60. Alenfeld FE, Wuster C, Funck C, et al. Ultrasound measurements at the proximal phalanges in healthy women and patients with hip fractures. *Osteoporos Int*. 1998;8(5):393-398.
61. Cunningham JL, Fordham JN, Hewitt TA, Speed CA. Ultrasound velocity and attenuation at different skeletal sites compared with bone mineral density measured using dual energy X-ray absorptiometry. *Br J Radiol*. 1996;69(817):25-32.
62. Faulkner KG, McClung MR, Coleman LJ, Kingston-Sandahl E. Quantitative ultrasound of the heel: correlation with densitometric measurements at different skeletal sites. *Osteoporos Int*. 1994;4:42-47.
63. Formica CA, Nieves JW, Cosman F, Garrett P, Lindsay R. Comparative assessment of bone mineral measurements using dual X-ray absorptiometry and peripheral quantitative computed tomography. *Osteoporos Int*. 1998;8(5):460-467.
64. Graafmans WC, Van Lingen A, Ooms ME, Bezemer PD, Lips P. Ultrasound measurements in the calcaneus: precision and its relation with bone mineral density of the heel, hip, and lumbar spine. *Bone*. 1996;19(2):97-100.
65. Grampp S, Jergas M, Lang P, et al. Quantitative CT assessment of the lumbar spine and radius in patients with osteoporosis. *Am J Roentgenol*. 1996;167(1):133-140.
66. Greenspan SL, Bouxsein ML, Melton ME, et al. Precision and discriminatory ability of calcaneal bone assessment technologies. *J Bone Miner Res*. 1997;12(8):1303-1313.
67. Langton CM, Ballard PA, Bennett DK, Purdie DW. A comparison of the sensitivity and specificity of calcaneal ultrasound measurements with clinical criteria for bone densitometry (DEXA) referral. *Clin Rheumatol*. 1997;16(1):117-118.

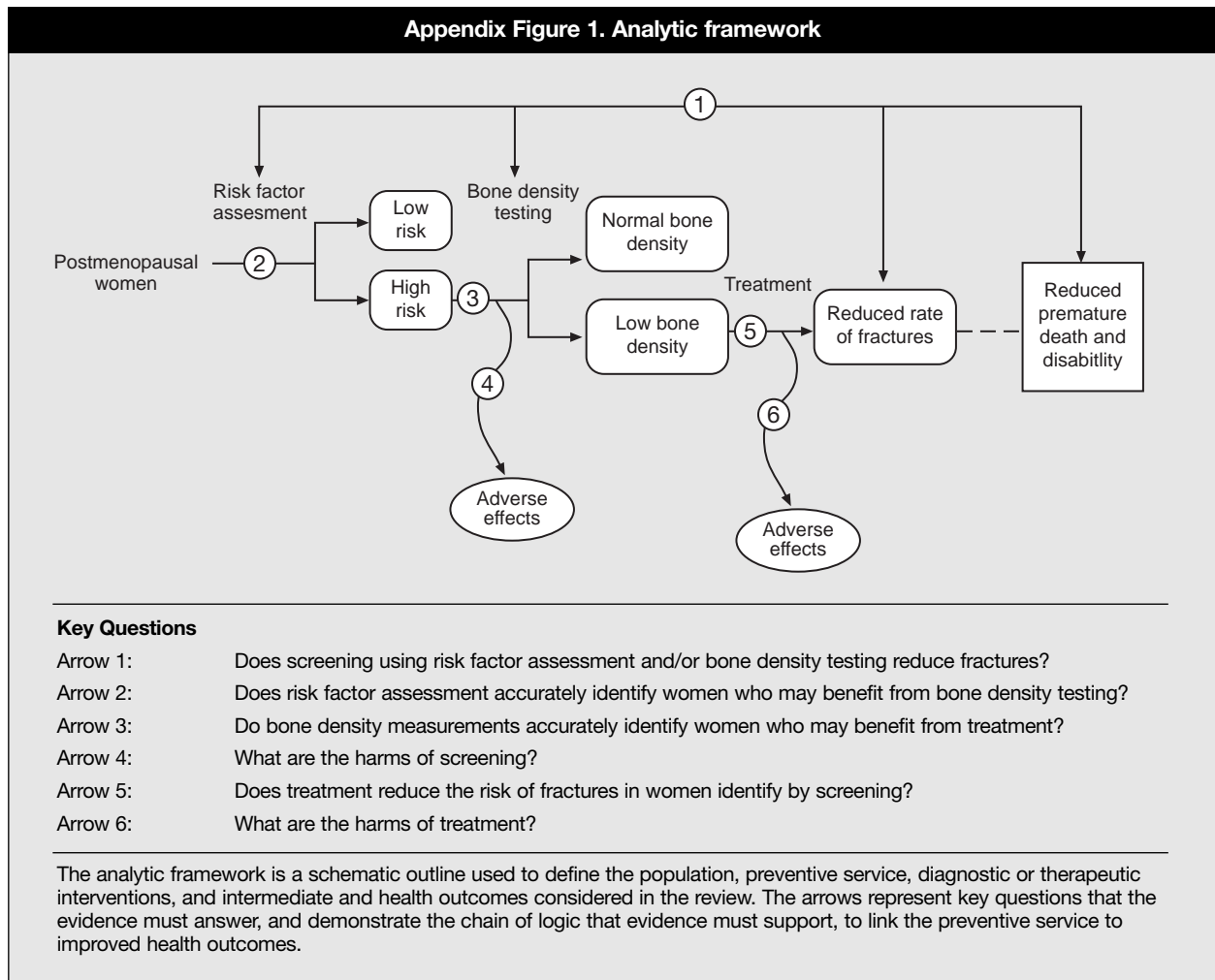
68. Laval-Jeantet AM, Bergot C, Williams M, Davidson K, Laval-Jeantet M. Dual-energy X-ray absorptiometry of the calcaneus: comparison with vertebral dual-energy X-ray absorptiometry and quantitative computed tomography. *Calcif Tissue Int.* 1995;56(1):14-18.
69. Martin JC, Reid DM. Appendicular measurements in screening women for low axial bone mineral density. *Br J Radiol.* 1996;69(819):234-240.
70. Massie A, Reid DM, Porter RW. Screening for osteoporosis: comparison between dual energy X-ray absorptiometry and broadband ultrasound attenuation in 1000 perimenopausal women. *Osteoporos Int.* 1993;3(2):107-110.
71. Naganathan V, March L, Hunter D, Pocock NA, Markovey J, Sambrook PN. Quantitative heel ultrasound as a predictor for osteoporosis. *Med J Aust.* 1999;171(6):297-300.
72. Pocock NA, Noakes KA, Howard GM, et al. Screening for osteoporosis: what is the role of heel ultrasound? *Med J Aust.* 1996;164:367-370.
73. Rosenthal L, Tenenhouse A, Caminis J. A correlative study of ultrasound calcaneal and dual-energy X-ray absorptiometry bone measurements of the lumbar spine and femur in 1000 women. *Eur J Nucl Med.* 1995;22(5):402-406.
74. Roux C, Lemonnier E, Lolta S, et al. [Ultrasound attenuation in calcaneus and bone density.] *Rev Rhum Engl Ed Fr.* 1993;60:897-906.
75. Salamone L, Krall E, Dawson-Hughes B. Comparison of broadband ultrasound attenuation to single X-ray absorptiometry measurements at the calcaneus in postmenopausal women. *Calcif Tissue Int.* 1994;54:87-90.
76. Schott AM, Weill-Engerer S, Hans D, Duboeuf F, Delmas PD, Meunier PJ. Ultrasound discriminates patients with hip fracture equally well as dual energy X-ray absorptiometry and independently of bone mineral density. *J Bone Miner Res.* 1995;10(2):243-249.
77. Tromp AM, Smit JH, Deeg DJ, Lips P. Quantitative ultrasound measurements of the tibia and calcaneus in comparison with DXA measurements at various skeletal sites. *Osteoporos Int.* 1999;9(3):230-235.
78. Turner CH, Peacock M, Timmerman L, Neal JM, Johnston CC Jr. Calcaneal ultrasonic measurements discriminate hip fracture independently of bone mass. *Osteoporos Int.* 1995;5:130-135.
79. Young H, Howey S, Purdie DW. Broadband ultrasound attenuation compared with dual-energy X-ray absorptiometry in screening for postmenopausal low bone density. *Osteoporos Int.* 1993;3(3):160-164.
80. Ahmed AI, Blake GM, Rymer JM, Fogelman I. Screening for osteopenia and osteoporosis: do the accepted normal ranges lead to overdiagnosis? *Osteoporos Int.* 1997;7:432-438.
81. Petley GW, Cotton AM, Murrills AJ, et al. Reference ranges of bone mineral density for women in southern England: the impact of local data on the diagnosis of osteoporosis. *Br J Radiol.* 1996;69(823):655-660.
82. Chen Z, Maricic M, Lund P, Tesser J, Gluck O. How the new Hologic hip normal reference values affect the densitometric diagnosis of osteoporosis. *Osteoporos Int.* 1998;8:423-227.
83. Simmons A, Barrington S, O'Doherty MJ, Coakley AJ. Dual energy X-ray absorptiometry normal reference range use within the UK and the effect of different normal ranges on the assessment of bone density. *Br J Radiol.* 1995;68(812):903-909.
84. Lunt M, Felsenberg D, Reeve J, et al. Bone density variation and its effects on risk of vertebral deformity in men and women studied in thirteen European centers: the EVOS Study. *J Bone Miner Res.* 1997;12(11):1883-1894.
85. Laskey M, Crisp A, Cole T, Compston J. Comparison of the effect of different reference data on Lunar DPX and Hologic QDR-1000 dual-energy X-ray absorptiometers. *Br J Radiol.* 1992;65(780):1124-1129.
86. Arlot ME, Sornay-Rendu E, Garnero P, Vey-Marty B, Delmas PD. Apparent pre- and postmenopausal bone loss evaluated by DXA at different skeletal sites in women: the OFELY cohort. *J Bone Miner Res.* 1997;12(4):683-690.
87. Faulkner KG, von Stetten E, Miller P. Discordance in patient classification using T-scores. *J Clin Densitomet.* 1999;2(3):343-350.
88. Grampp S, Henk CB, Fuerst TP, et al. Diagnostic agreement of quantitative sonography of the calcaneus with dual X-ray absorptiometry of the spine and femur. *Am J Roentgenol.* 1999;173(2):329-334.
89. Kroger H, Lunt M, Reeve J, et al. Bone density reduction in various measurement sites in men and women with osteoporotic fractures of spine and hip:

- the European quantitation of osteoporosis study. *Calcif Tissue Int.* 1999;64(3):191-199.
90. Varney LF, Parker RA, Vincelette A, Greenspan SL. Classification of osteoporosis and osteopenia in postmenopausal women is dependent on site-specific analysis. *J Clin Densitomet.* 1999;2(3):275-283.
  91. Marshall D, Johnell O, Wedel H. Meta-analysis of how well measures of bone mineral density predict occurrence of osteoporotic fractures. *BMJ.* 1996;312:1254-1259.
  92. Cummings SR, Black DM, Nevitt MC, et al. Bone density at various sites for prediction of hip fractures. *Lancet.* 1993;341:72-75.
  93. Melton LJ, Atkinson E, O'Fallon W, Wahner H, Riggs B. Long-term fracture prediction by bone mineral assessed at different skeletal sites. *J Bone Miner Res.* 1993;8(10):1227-1233.
  94. Black DM, Cummings SR, Genant HK, Nevitt MC, Palermo L, Browner W. Axial and appendicular bone density predict fractures in older women. *J Bone Miner Res.* 1992;7(6):633-638.
  95. Bauer DC, Gluer CC, Cauley JA, et al. Broadband ultrasound attenuation predicts fractures strongly and independently of densitometry in older women: a prospective study. Study of Osteoporotic Fractures Research Group. *Arch Intern Med.* 1997;157(6):629-634.
  96. Nevitt MC, Johnell O, Black DM, Ensrud K, Genant HK, Cummings SR. Bone mineral density predicts non-spine fractures in very elderly women. Study of Osteoporotic Fractures Research Group. *Osteoporos Int.* 1994;4(6):325-331.
  97. Duboeuf F, Hans D, Schott AM, et al. Different morphometric and densitometric parameters predict cervical and trochanteric hip fracture: the EPIDOS Study. *J Bone Miner Res.* 1997;12(11):1895-1902.
  98. Garnero P, Dargent-Molina P, Hans D, et al. Do markers of bone resorption add to bone mineral density and ultrasonographic heel measurement for the prediction of hip fracture in elderly women? The EPIDOS prospective study. *Osteoporos Int.* 1998;8(6):563-569.
  99. Hans D, Dargent-Molina P, Schott AM, et al. Ultrasonographic heel measurements to predict hip fracture in elderly women: the EPIDOS prospective study. *Lancet.* 1996;348(9026):511-514.
  100. Schott AM, Cormier C, Hans D, et al. How hip and whole-body bone mineral density predict hip fracture in elderly women: the EPIDOS Prospective Study. *Osteoporos Int.* 1998;8(3):247-254.
  101. Nelson H. *Hormone Replacement Therapy and Osteoporosis.* Systematic Evidence Review No. 12 (Prepared by the Oregon Health & Science University Evidence-based Practice Center under Contract No. 290-97-0018). Rockville, MD: Agency for Healthcare Research and Quality. August 2002. (Available on the AHRQ Web site at: [www.ahrq.gov/clinic/serfiles.htm](http://www.ahrq.gov/clinic/serfiles.htm)).
  102. Cranney A, Wells G, Willan A, et al. Meta-analysis of alendronate for the treatment of postmenopausal women. *Endocr Rev.* 2002; 23:517-523.
  103. Adami S, Passeri M, Ortolani S, et al. Effects of oral alendronate and intranasal salmon calcitonin on bone mass and biochemical markers of bone turnover in postmenopausal women with osteoporosis. *Bone.* 1995:383-390.
  104. Black DM, Cummings SR, Karpf DB, et al. Randomised trial of effect of alendronate on risk of fracture in women with existing vertebral fractures. Fracture Intervention Trial Research Group. *Lancet.* 1996:1535-1541.
  105. Bone HG, Downs RW Jr, Tucci JR, et al. Dose-response relationships for alendronate treatment in osteoporotic elderly women. Alendronate Elderly Osteoporosis Study Centers. *J of Clin Endocrin & Met.* 1997:265-274.
  106. Chesnut CH III, McClung MR, Ensrud KE, et al. Alendronate treatment of the postmenopausal osteoporotic woman: effect of multiple dosages on bone mass and bone remodeling. *Am J of M.* 1995:144-152.
  107. Cummings SR, Black DM, Thompson DE, et al. Effect of alendronate on risk of fracture in women with low bone density but without vertebral fractures: results from the Fracture Intervention Trial. *JAMA.* 1998:2077-2082.
  108. Greenspan SL, Parker RA, Ferguson L, Rosen HN, Maitland-Ramsey L, Karpf DB. Early changes in biochemical markers of bone turnover predict the long-term response to alendronate therapy in representative elderly women: A randomized clinical trial. *J Bone & Min Res.* 1998;13:1431-1438.
  109. Hosking D, Chilvers CE, Christiansen C, et al. Prevention of bone loss with alendronate in postmenopausal women under 60 years of age. Early Postmenopausal Intervention Cohort Study Group. *N Engl J Med.* 1998:485-492.

110. Liberman UA, Weiss SR, Broll J, et al. Effect of oral alendronate on bone mineral density and the incidence of fractures in postmenopausal osteoporosis. The Alendronate Phase III Osteoporosis Treatment Study Group. *N Engl J Med.* 1995;1437-1443.
111. McClung M, Clemmesen B, Daifotis A, et al. Alendronate prevents postmenopausal bone loss in women without osteoporosis. A double-blind, randomized, controlled trial. Alendronate Osteoporosis Prevention Study Group. *Ann Intern Med.* 1998;253-261.
112. Pols HA, Felsenberg D, Hanley DA, et al. Multinational, placebo-controlled, randomized trial of the effects of alendronate on bone density and fracture risk in postmenopausal women with low bone mass: results of the FOSIT study. Foxamax International Trial Study Group. *Osteopor Intern.* 1999;461-468.
113. Bonnick S, Rosen C, Mako B, DeLucca P, Byrnes C, Melton M. Alendronate vs calcium for treatment of osteoporosis in postmenopausal women. *Bone.* 1998;23(suppl 5):S476.
114. Cummings SR, Black DM, Thompson DE. Effect of alendronate reduces on risk of fracture in women with low bone density but without vertebral fractures: results from the Fracture Intervention Trial. *JAMA.* 1998;280(24):2077-2082.
115. McClung M, Geusens P, Miller P, et al. Effect of risedronate on the risk of hip fracture in elderly women. *N Engl J Med.* 2001;344(5):333-340.
116. Johansen HK, Gotzsche PC. Problems in the design and reporting of trials of antifungal agents encountered during meta-analysis. *JAMA.* 1999;282(18):1752-1759.
117. Djulbegovic B, Lacey M, Cantor A, et al. The uncertainty principle and industry-sponsored research. *Lancet.* 2000;356(356):635-638.
118. Rimes KA, Salkovskis PM, Shipman AJ. Psychological and behavioural effects of bone density screening for osteoporosis. *Psychol Health.* 1999;14:585-608.
119. Lyles KW, Gold DT, Shipp KM, Pieper CF, Martinez S, Mulhausen PL. Association of osteoporotic vertebral compression fractures with impaired functional status. *Am J Med.* 1993;94:595-601.
120. Stock JL, Waud CE, Coderre JA, et al. Clinical reporting to primary care physicians leads to increased use and understanding of bone densitometry and affects the management of osteoporosis: a randomized trial. *Ann Intern Med.* 1998;128(12):996-999.
121. Ettinger B, Pressman A, Schein J. Clinic visits and hospital admissions for care of acid-related upper gastrointestinal disorders in women using alendronate for osteoporosis. *Am J Manag Care.* 1998;4(10):1377-1382.
122. *National Physician Fee Schedule Payment Amount File.* Baltimore, MD: Healthcare Financing Administration; 2000.
123. Melton LJ III, Chrischilles EA, Cooper C, Lane AW, Riggs BL. Perspective. How many women have osteoporosis? *J Bone Miner Res.* 1992;7(9):1005-1010.
124. Reginster J, Minne HW, Sorensen OH, et al. Randomized trial of the effects of risedronate on vertebral fractures in women with established postmenopausal osteoporosis: Vertebral Efficacy with Risedronate Therapy (VERT) Study Group. *Osteo Intern.* 2000;11(1):83-91.
125. Weinstein L, Ullery B, Bourguignon C. A simple system to determine who needs osteoporosis screening. *Obstet Gyn.* 1999;93:757-760.
126. Health Technology Assessment. Number 6: *Bone Densitometry: Patients with Asymptomatic Hyperparathyroidism.* Agency for Health Care Policy and Research, U.S. Department of Health and Human Services. Rockville, MD: Agency for Health Care Policy and Research; 1995;AHRQ publication number 96-0004.

## Appendix

Appendix Figure 1. Analytic framework



### Key Questions

- Arrow 1: Does screening using risk factor assessment and/or bone density testing reduce fractures?
- Arrow 2: Does risk factor assessment accurately identify women who may benefit from bone density testing?
- Arrow 3: Do bone density measurements accurately identify women who may benefit from treatment?
- Arrow 4: What are the harms of screening?
- Arrow 5: Does treatment reduce the risk of fractures in women identify by screening?
- Arrow 6: What are the harms of treatment?

The analytic framework is a schematic outline used to define the population, preventive service, diagnostic or therapeutic interventions, and intermediate and health outcomes considered in the review. The arrows represent key questions that the evidence must answer, and demonstrate the chain of logic that evidence must support, to link the preventive service to improved health outcomes.

Appendix Table 1. Summary of evidence quality			
Evidence		Evidence	
Linkage (Fig 1)	Key Questions	Code*	External Validity
Arrow 1:	Does screening using risk factor assessment or bone density testing reduce fractures?	None	
Arrow 2:	Does risk factor assessment accurately identify women who may benefit from bone density testing?	II-2	Poor-fair: no instruments used widely for screening purposes although some were developed from community-based studies.
Arrow 3:	Do bone density measurements accurately identify women who may benefit from treatment?	II-2	Fair: not known how well results of studies translate to practice.
Arrow 4:	What are the harms of screening?	II-2, III	Poor: small studies, selected participants.
Arrow 5:	Does treatment reduce the risk of fractures in women identified by screening?	II	Poor-fair: participants of trials may be different than primary care patients.
Arrow 6:	What are the harms of treatment?	I, II-2	Poor-fair: difficult to know how risks impact individual patients.

\*Evidence codes based on study design categories.<sup>22</sup>

I = randomized, controlled trials

II-1 = controlled trials without randomization

II-2 = cohort or case-control analytic studies,

II-3 = multiple time series, dramatic uncontrolled experiments

III = opinions of respected authorities, descriptive studies

†Based on criteria developed by the U.S. Preventive Services Task Force.<sup>22</sup>

**Appendix Table 2. Formulas for calculations in outcomes table**

**Number of hip fractures in untreated women with osteoporosis**

*No risk factors:*

(5-year probability of hip fracture in women with osteoporosis) x (prevalence of osteoporosis) x N

*At least one risk factor:*

1.7 x (5-year probability of hip fracture in women with osteoporosis) x (prevalence of osteoporosis) x N

**Number of hip fractures in treated women with osteoporosis**

*No risk factors:*

(RR for hip fracture from treatment trials) x (0.7 adherence) x (number of hip fractures in untreated women with osteoporosis) + (1 – 0.7 adherence) x (number of hip fractures in untreated women with osteoporosis)

*At least one risk factor:*

(RR for hip fracture from treatment trials) x (0.7 adherence) x (number of hip fractures in untreated women with osteoporosis with at least one risk factor) + (1 – 0.7 adherence) x (number of hip fractures in untreated women with osteoporosis with at least one risk factor)

**Number-needed-to-screen for benefit**

N / (number of hip fractures without treatment – number with treatment)

**Number-needed-to-treat**

Number of women with osteoporosis / (number of hip fractures without treatment – number with treatment)

**Appendix Table 3. Formulas for calculations in outcomes table**

The Methods Work Group for the U.S. Preventive Services Task Force developed a set of criteria to determine how well individual studies were conducted (internal validity).<sup>22</sup> The Task Force defined a 3-category rating of “good,” “fair,” and “poor,” based on these criteria. In general, a good study is one that meets all criteria well. A fair study is one that does not meet, or it is not clear that it meets, at least one criterion but has no known important limitation that could invalidate its results. A poor study has important limitations. These specifications are not meant to be rigid rules but rather are intended to be general guidelines, and individual exceptions, when explicitly explained and justified, can be made.

**Randomized Controlled Trials**

- Adequate randomization, including concealment and equal distribution of potential confounders among groups.
- Maintenance of comparable groups (includes attrition, cross-overs, adherence, contamination).
- Important differential loss to follow-up or overall high loss to follow-up.
- Equal, reliable, and valid measurements (includes masking of outcome assessment).
- Clear definition of interventions.
- Important outcomes considered.
- Intention-to-treat analysis.

**Case-Control Studies**

- Accurate ascertainment of cases.
- Nonbiased selection of case patients and controls with exclusion criteria applied equally to both.
- High response rate.
- Diagnostic testing procedures applied equally to each group.
- Measurement of exposure accurate and applied equally to each group.
- Appropriate attention to potential confounding variables.

**Cohort Studies**

- Consideration of potential confounders with either restriction or measurement for adjustment in the analysis; consideration of inception cohorts.
- Maintenance of comparable groups (includes attrition, cross-overs, adherence, contamination).
- Important differential loss to follow-up or overall high loss to follow-up.
- Equal, reliable, and valid measurements (includes masking of outcome assessment).
- Clear definition of interventions.
- Important outcomes considered.
- Adjustment for potential confounders in analysis.

**Diagnostic Accuracy Studies**

- Screening test relevant, available for primary care, adequately described.
- Study uses a credible reference standard, performed regardless of test results.
- Reference standard interpreted independently of screening test.
- Handles indeterminate results in a reasonable manner.
- Spectrum of patients included in study.
- Adequate sample size
- Administration of reliable screening test.