

Screening for Breast Cancer: An Update for the U.S. Preventive Services Task Force

Heidi D. Nelson, MD, MPH; Kari Tyne, MD; Arpana Naik, MD; Christina Bougatsos, BS; Benjamin K. Chan, MS; and Linda Humphrey, MD, MPH

Background: This systematic review is an update of evidence since the 2002 U.S. Preventive Services Task Force recommendation on breast cancer screening.

Purpose: To determine the effectiveness of mammography screening in decreasing breast cancer mortality among average-risk women aged 40 to 49 years and 70 years or older, the effectiveness of clinical breast examination and breast self-examination, and the harms of screening.

Data Sources: Cochrane Central Register of Controlled Trials and Cochrane Database of Systematic Reviews (through the fourth quarter of 2008), MEDLINE (January 2001 to December 2008), reference lists, and Web of Science searches for published studies and Breast Cancer Surveillance Consortium for screening mammography data.

Study Selection: Randomized, controlled trials with breast cancer mortality outcomes for screening effectiveness, and studies of various designs and multiple data sources for harms.

Data Extraction: Relevant data were abstracted, and study quality was rated by using established criteria.

Data Synthesis: Mammography screening reduces breast cancer mortality by 15% for women aged 39 to 49 years (relative risk,

0.85 [95% credible interval, 0.75 to 0.96]; 8 trials). Data are lacking for women aged 70 years or older. Radiation exposure from mammography is low. Patient adverse experiences are common and transient and do not affect screening practices. Estimates of overdiagnosis vary from 1% to 10%. Younger women have more false-positive mammography results and additional imaging but fewer biopsies than older women. Trials of clinical breast examination are ongoing; trials for breast self-examination showed no reductions in mortality but increases in benign biopsy results.

Limitation: Studies of older women, digital mammography, and magnetic resonance imaging are lacking.

Conclusion: Mammography screening reduces breast cancer mortality for women aged 39 to 69 years; data are insufficient for older women. False-positive mammography results and additional imaging are common. No benefit has been shown for clinical breast examination or breast self-examination.

Primary Funding Source: Agency for Healthcare Research and Quality.

Ann Intern Med. 2009;151:727-737.

For author affiliations, see end of text.

www.annals.org

This systematic evidence review is an update of evidence for the U.S. Preventive Services Task Force (USPSTF) recommendation on breast cancer screening for average-risk women (1). In 2002, on the basis of results of a previous review (2, 3), the USPSTF recommended mammography screening, with or without clinical breast examination (CBE), every 1 to 2 years for women aged 40 years or older. They concluded that the evidence was insufficient to recommend for or against routine CBE alone and for or against teaching or performing routine breast self-examination (BSE).

Breast cancer is the most frequently diagnosed non-cutaneous cancer and the second leading cause of cancer deaths among women in the United States (4). In 2008, an estimated 182 460 cases of invasive and 67 770 cases of noninvasive breast cancer were diagnosed, and 40 480 women died of breast cancer (4). Incidence increases with age, and the probability of a woman developing breast cancer is 1 in 69 in her 40s, 1 in 38 in her 50s, and 1 in 27 in her 60s (5). Data suggest that incidence has stabilized in recent years (6–8) and mortality has decreased since 1990 (9, 10) because of many factors, including screening (11). In 2005, 68% of women aged 40 to 65 years had screening mammography within the previous 2 years in the United States (4).

Breast cancer is known to have an asymptomatic phase that can be detected with mammography. Mammography screening is sensitive (77% to 95%), specific (94% to 97%), and acceptable to most women (2). It is done by using either plain film or digital technologies, although the shift to digital is ongoing. Contrast-enhanced magnetic resonance imaging (MRI) has traditionally been used to evaluate women who have already received a diagnosis of breast cancer. Recommendations for its use in screening pertain to certain high-risk groups only (12). If a woman has an

See also:

Print

Editorial comment.	750
Related articles.	703, 716, 738
Summary for Patients.	I-44

Web-Only

Appendixes
Appendix Tables
Appendix Figures
Conversion of graphics into slides
Downloadable recommendation summary

abnormal mammographic finding on screening or a concerning finding on physical examination, additional imaging and biopsy may be recommended. Additional imaging may consist of diagnostic mammography or mammography done with additional or special views, targeted breast ultrasonography, or breast MRI (13, 14). Additional imaging may help classify the lesion as a benign or suspicious finding to determine the need for biopsy. Biopsy techniques vary in the level of invasiveness and amount of tissue acquired, which affects yield and patient experience.

We focus on new studies and evidence gaps that were unresolved at the time of the 2002 USPSTF recommendation. These include the effectiveness of mammography screening in decreasing breast cancer mortality among average-risk women aged 40 to 49 years and 70 years or older; the effectiveness of CBE and BSE in decreasing breast cancer mortality among women of any age; and the magnitude of harms of screening with mammography, CBE, and BSE.

METHODS

The USPSTF and Agency for Healthcare Research and Quality (AHRQ) developed the key questions that guided our update. Investigators created an analytic framework incorporating the key questions and outlining the patient population, interventions, outcomes, and harms of the screening process (**Appendix Figure 1**, available at www.annals.org). The target population includes women without preexisting breast cancer and not considered to be at high risk for breast cancer on the basis of extensive family history of breast or ovarian cancer or other personal risk factors, such as abnormal breast pathology or deleterious genetic mutations. Harms include radiation exposure, pain during procedures, patient anxiety and other psychological responses, consequences of false-positive and false-negative test results, and overdiagnosis. "Overdiagnosis" refers to women receiving a diagnosis of invasive or noninvasive breast cancer who had abnormal lesions that were unlikely to become clinically evident during their lifetimes in the absence of screening (15). Overdiagnosis may have a greater effect on women with shorter life expectancies because of age or comorbid conditions.

Data Sources and Searches

We searched the Cochrane Central Register of Controlled Trials and Cochrane Database of Systematic Reviews (through the fourth quarter of 2008) and MEDLINE (1 January 2001 to 1 December 2008) for relevant studies and meta-analyses (16). We also conducted secondary referencing by manually reviewing reference lists of key articles and searching citations by using Web of Science (17). **Appendix Figure 2** (available at www.annals.org) shows our search results.

Study Selection

We selected studies on the basis of inclusion and exclusion criteria developed for each key question (16). To

determine the effectiveness of screening, we included randomized, controlled trials (RCTs) and updates to previously published trials of screening with mammography (film and digital), MRI, CBE, or BSE with breast cancer mortality outcomes published since 2001. One trial was translated into English from Russian for this update (18). We also reviewed meta-analyses that included studies with mortality data. We excluded studies other than controlled trials and systematic reviews or those without breast cancer mortality as an outcome.

We determined harms of screening by using evidence from several study designs and data sources. For mammography, we focused our searches on recently published systematic reviews and meta-analyses of the harms previously described. We also conducted specific searches for primary studies published more recently than the included systematic reviews and meta-analyses. In addition, we evaluated data from the Breast Cancer Surveillance Consortium (BCSC), which is a collaborative network of 5 mammography registries and 2 affiliated sites with linkages to pathology and tumor registries across the United States that is sponsored by the National Cancer Institute (19, 20). These data draw from community samples that are representative of the larger, national population and may be more applicable to current practice in the United States than other published sources. Data include a mix of film and digital mammography. For harms of CBE and BSE, we reviewed screening trials of these procedures that reported potential adverse effects, used recently published systematic reviews, and conducted focused searches.

Data Extraction and Quality Assessment

We extracted details about the patient population, study design, analysis, follow-up, and results. By using predefined criteria developed by the USPSTF (21), 2 investigators rated the quality of each study as good, fair, or poor and resolved discrepancies by consensus. We included only systematic reviews rated as good quality in the report and RCTs rated as fair or good quality in the meta-analysis.

Data Synthesis and Analysis

Meta-analysis of Mammography Trials

We updated the 2002 meta-analysis to include new findings from published trials of mammography screening compared with control participants for women aged 40 to 49 years that reported relative risk (RR) reduction in breast cancer mortality. We conducted similar updates for other age groups for context. We used breast cancer mortality results from trials to estimate the pooled RR. We calculated estimates from a random-effects model under the Bayesian data analytic framework by using the R Bugs package in R (22, 23), the same model as that used in the previous report (2). The **Appendix** (available at www.annals.org) provides additional details. We used

funnel plots to assess publication bias and L'Abbé plots to assess heterogeneity.

Analysis of BCSC Data

We obtained data from 600 830 women aged 40 years or older undergoing routine mammography screening from 2000 to 2005 at the BCSC sites from the BCSC Statistical Coordinating Center and stratified the data by age in decades. Routine screening was defined as having at least 1 mammogram within the previous 2 years, which is consistent with current USPSTF recommendations. For women who had several mammograms during the study, 1 result was randomly selected to be included in the calculations. These data constitute selected BCSC data intended to represent the experience of a cohort of regularly screened women without preexisting breast cancer or abnormal physical findings.

Variables include the numbers of positive and negative mammography results and, of these, the number of true-negative and false-negative results based on follow-up data within 1 year of mammography screening. A positive mammography result was defined according to standardized terminology and assessments of the American College of Radiology Breast Imaging Reporting and Data System (BI-RADS) manual used by the BCSC (24). These include 4 categories: needs additional evaluation (category 0), probably benign with a recommendation for immediate follow-up (category 3), suspicious (category 4), or highly suggestive of cancer (category 5) (25). For women who had a positive screening mammography result, additional data included the number of women undergoing additional imaging and biopsy; diagnoses, including invasive cancer and ductal carcinoma in situ; and negative results. We considered additional imaging procedures and biopsies done within 60 days of the screening mammography to be related to screening. From these data, we calculated age-specific rates (numbers per 1000 women per round) of invasive breast cancer, ductal carcinoma in situ, false-positive and false-negative mammography results, additional imaging, and biopsies. We based true-positive and true-negative mammography results on invasive and non-invasive cancer diagnosis. Rates of additional imaging and rates of biopsies may be underestimated because of incomplete capture of these examinations by the BCSC. The full evidence review (16) presents a sensitivity analysis of missing values; however, this does not include records that were unavailable to the BCSC.

Role of the Funding Source

The AHRQ funded this work, provided project oversight, developed key questions in conjunction with USPSTF members, and assisted with internal and external review of the draft manuscript but had no additional role in the design, conduct, or reporting of the review. Fifteen external experts not affiliated with the USPSTF reviewed the draft manuscript.

RESULTS

Breast Cancer Mortality Reduction With Mammography Screening for Women Aged 40 to 49 Years and 70 Years or Older (Key Question 1a)

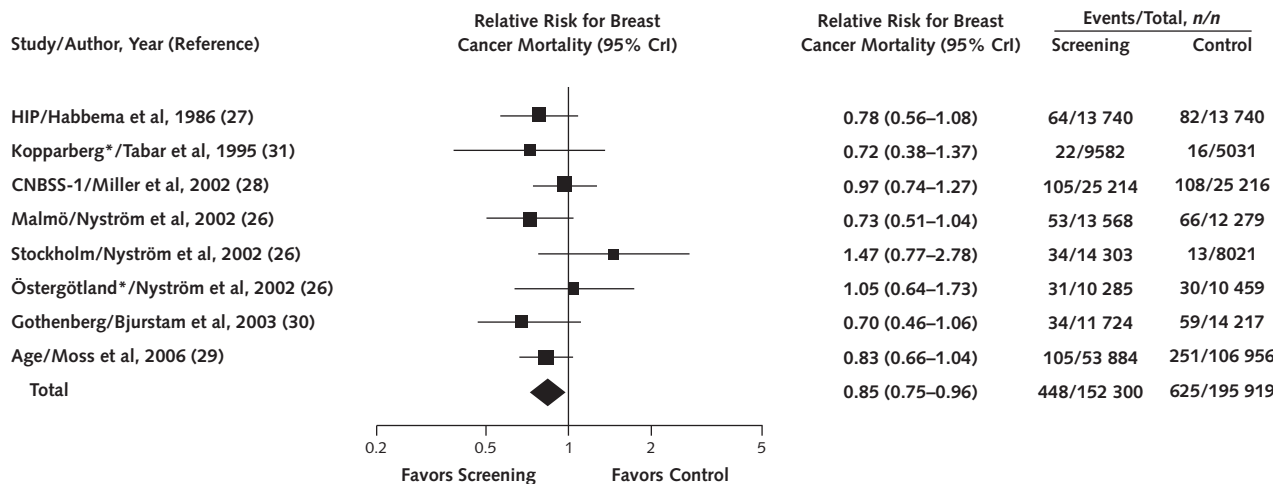
The 2002 evidence review for the USPSTF included a meta-analysis (2) of 7 randomized trials of mammography screening rated as fair quality (26–28). Since then, a randomized trial from the United Kingdom that evaluated the effect of mammography screening, specifically in women aged 40 to 49 years, has been published (29), and data from a previously reported Swedish trial (30) have been updated. No trials of screening average-risk women that specifically evaluated the effectiveness of digital mammography or MRI have been published.

The Age trial (29) included 160 921 women aged 39 to 41 years who were randomly assigned from 1991 to 1997 to screening with annual mammography until 48 years of age or a control group who received usual care in the United Kingdom (**Appendix Table 1**, available at www.annals.org). After 10.7 years of follow-up, the RR was 0.97 (95% CI, 0.89 to 1.04) for all-cause mortality and 0.83 (CI, 0.66 to 1.04) for breast cancer mortality among women randomly assigned to screening. On the basis of the absolute reduction in breast cancer mortality among women randomly assigned to screening, the number needed to invite for screening to prevent 1 death from breast cancer over 10 years was 2512 (CI, 1149 to 13 544). The Age trial (29) met USPSTF criteria for fair rather than good quality because contamination of groups was not described and 70% or fewer women attended screening across the trial.

A new publication provides additional data from the Gothenburg trial (**Appendix Table 1**) (30). In this article, breast cancer mortality rates and risk ratios were calculated by using 3 methods, including a more comprehensive method that considers breast cancer mortality from cancer diagnosed during the follow-up phase of the trial. When this method was applied to women aged 39 to 49 years randomly assigned to screening at trial entry, the RR for breast cancer mortality was 0.69 (CI, 0.45 to 1.05) after 13 years of follow-up (30).

For women aged 39 to 49 years, 8 trials provided data for the meta-analysis, including 6 from the 2002 meta-analysis (Health Insurance Plan [HIP] of Greater New York [27], Canadian National Breast Screening Study-1 [CNBSS-1] [28], Stockholm [26], Malmö [26], Swedish Two-County [2 trials] [26]), an update of the Gothenburg trial (30), and the Age trial (29). Combining results, the pooled RR for breast cancer mortality for women randomly assigned to mammography screening was 0.85 (95% credible interval [CrI], 0.75 to 0.96), which indicates a 15% reduction in breast cancer mortality in favor of screening (**Figure**). This corresponds to a number needed to invite for screening to prevent 1 breast cancer death of 1904 (CrI, 929 to 6378) over several screening rounds that varied by trial (2 to 9 rounds), and 11 to 20 years of follow-up. A funnel plot did not indicate the presence of publication bias, and a L'Abbé plot did

Figure. Pooled relative risk for breast cancer mortality from mammography screening trials compared with control for women aged 39 to 49 years.



CNBSS-1 = Canadian National Breast Screening Study-1; CrI = credible interval; HIP = Health Insurance Plan of Greater New York.
 * Swedish Two-County trial.

not reveal serious heterogeneity among the studies (16). Results are consistent with the 2002 meta-analysis (RR, 0.85 [CrI, 0.73 to 0.99]; 7 trials) (2, 3).

Sensitivity analysis excluded the HIP trial (27) because it was conducted more than 30 years ago and used outdated technology and the CNBSS-1 trial (28) because it enrolled prescreened volunteers rather than unselected samples. Exclusion of these trials did not significantly influence the results (16).

Results for women aged 70 years or older were confined to data from the Swedish Two-County trial (Östergötland) of women aged 70 to 74 years, precluding meta-analysis. These results indicate an RR for breast cancer mortality of 1.12 (CI, 0.73 to 1.72) (26), based on a more conservative determination of cause of death than previous reports (31, 32). The absolute numbers of deaths were not reported, the number of enrolled women was low (approximately 5000 in each group), and the number needed to screen was not estimable.

Meta-analyses of trials for women aged 50 to 59 years and 60 to 69 years were done to compare with results for women aged 40 to 49 years and 70 years or older (Table 1). Results are not directly similar to the 2002 meta-analysis that provided a combined estimate for women aged 50 to 74 years (RR, 0.78 [CrI, 0.70 to 0.87]; 7 trials) (2).

For women aged 50 to 59 years, 6 trials (CNBSS-1 [28], Stockholm [26], Malmö [26], Swedish Two-County [2 trials] [26], and Gothenburg [30]) provided a pooled RR of 0.86 (CrI, 0.75 to 0.99) for breast cancer mortality for women randomly assigned to mammography screening. The number needed to invite was 1339 (CrI, 322 to 7455). Sensitivity analysis that excluded the CNBSS-1 trial

(28) resulted in a lower RR (0.81 [CrI, 0.68 to 0.95]). For women aged 60 to 69 years, 2 trials (Malmö [26] and Swedish Two-County [Östergötland] [26]) provided a pooled RR of 0.68 (CrI, 0.54 to 0.87) for breast cancer mortality for women randomly assigned to mammography screening. The number needed to invite was 377 (CrI, 230 to 1050).

Harms Associated With Mammography Screening (Key Question 2a)

Radiation Exposure

No studies directly measured the association between radiation exposure from mammography screening and breast cancer. Most x-rays are considered low-dose, low-energy radiation, with the mean glandular dose of bilateral, 2-view mammography averaging 7 mGy (33). For women aged 40 to 49 years, yearly mammography screening for 1

Table 1. Pooled RRs for Breast Cancer Mortality From Mammography Screening Trials for All Ages

Age	Trials Included, n	RR for Breast Cancer Mortality (95% CrI)	NNI to Prevent 1 Breast Cancer Death (95% CrI)
39–49 y	8*	0.85 (0.75–0.96)	1904 (929–6378)
50–59 y	6†	0.86 (0.75–0.99)	1339 (322–7455)
60–69 y	2‡	0.68 (0.54–0.87)	377 (230–1050)
70–74 y	1§	1.12 (0.73–1.72)	Not available

CrI = credible interval; NNI = number needed to invite to screening; RR = relative risk.

* Health Insurance Plan of Greater New York (27), Canadian National Breast Screening Study-1 (28), Stockholm (26), Malmö (26), Swedish Two-County trial (2 trials) (26, 31), Gothenburg trial (30), and Age trial (29).

† Canadian National Breast Screening Study-1 (28), Stockholm (26), Malmö (26), Swedish Two-County trial (2 trials) (26, 31), and Gothenburg trial (30).

‡ Malmö (26) and Swedish Two-County trial (Östergötland) (26).

§ Swedish Two-County trial (Östergötland) (26).

decade with potential additional imaging would expose an individual to approximately 60 mGy, although these levels vary (34). A recent systematic review included various types of studies of radiation exposure, such as radiation therapy, diagnostic radiation, and atomic bomb radiation, as the basis for predicting risk for inducing breast cancer (34). In studies of low-dose exposures, associations were inconsistent, whereas those of high-dose exposures indicated increased risk for breast cancer (34). The RRs in studies of high-dose exposures ranged from 1.33 to 11.39 for exposures of 0.3 to 43.4 Gy and were worse with higher doses of exposure, younger age at exposure, and longer follow-up (34). A more recent case-control study found that women exposed to diagnostic radiographs for screening or monitoring tuberculosis or pneumonia, or to therapeutic radiation for previous cancer, had increased risks for breast cancer (35).

Pain During Procedures

Breast compression is used during mammography to create uniform density, reduce breast thickness, and flatten overlying skin and tissues, which contributes to sharper images and reduces the radiation dose. However, compression may add to the discomfort of mammography for some women. A recent systematic review of 22 studies of pain and discomfort associated with mammography indicated that many women experience pain during the procedure (range, 1% to 77%), but few would consider this a deterrent from future screening (34). In these studies, pain was associated with the stage of the menstrual cycle, anxiety, and the anticipation of pain (34).

Anxiety, Distress, and Other Psychological Responses

Studies have shown conflicting results about anxiety, distress, and other psychological responses that result from mammography screening. A systematic review of 54 studies evaluated the adverse psychological effects of mammography screening programs (36). Most were cohort studies, and 24 used validated psychological measurement scales to assess the effects of screening. Studies indicated that women who received clear communication of their negative mammography results had minimal anxiety (36). Results were mixed in studies of women who were recalled for further testing as a result of screening. In several studies, women had persistent anxiety, despite eventual negative results, whereas some showed only transient anxiety (36). Some studies showed no differences between anxiety levels of women who had initial negative screening mammography results and those who had false-positive results (36).

A recent systematic review of 23 studies specifically examined the effects of false-positive screening mammography results on women aged 40 years or older (37). Twenty-six studies were included: 9 on psychological distress, 11 on anxiety, and 6 on worry. False-positive mammography results had no consistent effect on most wom-

en's general anxiety and depression but increased breast cancer-specific distress, anxiety, apprehension, and perceived breast cancer risk for some (37).

False-Positive and False-Negative Mammography Results, Additional Imaging, and Biopsies

Published data on false-positive and false-negative mammography results, additional imaging, and biopsies that reflect current practices in the United States are limited. The probability of a false-positive screening mammography result was estimated at 0.9% to 6.5% in a meta-analysis of studies of sensitivity and specificity of mammography published 10 years ago (38). The cumulative risk for false-positive mammography results has been reported as 21% to 49% after 10 mammography examinations for women in general (39–41), and up to 56% for women aged 40 to 49 years (41). Additional data about mammography test performance indicate that sensitivity, recall rates, and cancer detection rates increase as the months since previous mammography increase, whereas specificity decreases (42). Few studies evaluate the effect of negative mammography results. Women stated that they would not delay evaluation of a new abnormal physical finding despite a previous negative mammography result in 1 survey (43).

Data from the BCSC for regularly screened women that are based on results from a single screening round indicate that false-positive mammography results are common in all age groups but are most common among women aged 40 to 49 years (97.8 per 1000 women per screening round) (Table 2). False-negative mammography results occur least among women aged 40 to 49 years (1.0 per 1000 women per screening round). Rates of additional imaging are highest among women aged 40 to 49 years (84.3 per 1000 women per screening round) and decrease with age, whereas biopsy rates are lowest among women aged 40 to 49 years (9.3 per 1000 women per screening round) and increase with age. The BCSC results indicate that for every case of invasive breast cancer detected by mammography screening in women aged 40 to 49 years, 556 women have mammography, 47 have additional imaging, and 5 have biopsies.

Overdiagnosis

A review of RCTs of mammography screening compared the cumulative incidence of breast cancer in intervention and control groups to determine the extent of overdiagnosis (44). In the 5 trials in which the control group did not receive screening, the absolute excess cumulative incidence of invasive and in situ breast cancer attributed to overdiagnosis among women randomly assigned to screening mammography ranged from 0.07 to 0.73 per 1000 woman-years.

Eight studies report estimates of overdiagnosis using different methods (16). Estimates are derived from data

Table 2. Age-Specific Screening Results From the BCSC

Screening Result	Age Group				
	40–49 y	50–59 y	60–69 y	70–79 y	80–89 y
Outcomes per screening round (per 1000 screened), n*					
False-negative mammography result	1.0	1.1	1.4	1.5	1.4
False-positive mammography result	97.8	86.6	79.0	68.8	59.4
Additional imaging	84.3	75.9	70.2	64.0	56.3
Biopsy	9.3	10.8	11.6	12.2	10.5
Screening-detected invasive cancer	1.8	3.4	5.0	6.5	7.0
Screening-detected DCIS	0.8	1.3	1.5	1.4	1.5
Yield of screening per screening round, n					
Patients undergoing mammography to diagnose 1 case of invasive breast cancer†	556	294	200	154	143
Patients undergoing additional imaging to diagnose 1 case of invasive breast cancer‡	47	22	14	10	8
Patients undergoing biopsy to diagnose 1 case of invasive breast cancer§	5	3	2	2	1.5

BCSC = Breast Cancer Surveillance Consortium; DCIS = ductal carcinoma in situ.

* Calculated from BCSC data of regularly screened women on the basis of results from a single screening round. Rates of additional imaging and biopsies may be underestimated because of incomplete capture of these examinations by the BCSC.

† 1 per rate of screening-detected invasive cancer.

‡ Rate of additional imaging per rate of screening-detected invasive cancer.

§ Rate of biopsy per rate of screening-detected invasive cancer.

from screening programs in Italy (45), Denmark (46), and Norway and Sweden (47); a microsimulation model (48); analysis of incidence data from screening trials (46, 49, 50); and a Markov model with data from a screening trial (26) and several screening programs (51). None of these studies provide estimates specific to U.S. samples. Rates of overdiagnosis vary from less than 1% (45, 46, 49) to 30% (47), with most from 1% to 10%. Estimates differ by outcome (invasive vs. in situ breast cancer), by whether cases are incident or prevalent, and by age. The studies are too heterogeneous to combine statistically.

CBE Screening (Key Questions 1b and 2b)

Few trials have evaluated the effectiveness or harms of CBE in decreasing breast cancer mortality. In countries with widely practiced mammography screening, the use of CBE rests on its additional contribution to mortality reduction. The CNBSS-2 trial, which compares mammography with CBE versus CBE alone, showed no difference in mortality between these 2 approaches (52).

Three trials were designed to determine mortality outcomes by using CBE as the primary screening approach in countries with limited health care resources and without mammography screening programs (Appendix Table 2, available at www.annals.org). A randomized trial comparing CBE with no screening was conducted in the Philippines; however, it was discontinued after 1 screening round because of poor community acceptance and is inconclusive (53). Two randomized trials comparing CBE with no screening are ongoing in Egypt (54) and India (55).

In the pilot study for the Cairo Breast Screening Trial (54), 1.2% of women undergoing CBE had subsequent procedures with benign results. Of the 138 392 women examined in the Philippines study, 3479 had abnormal

CBEs and 1220 completed diagnostic work-ups (53). Of these women, 34 (3%) had cancer, 563 (46%) had no detectable abnormalities, and 623 (51%) had biopsy results that were benign.

BSE (Key Questions 1c and 2c)

Preliminary results from trials of BSE in Russia and Shanghai were reviewed for the 2002 report (2), and final results have since been published (Appendix Table 2) (18, 56, 57). The effect of BSE on all-cause mortality in St. Petersburg, Russia, a community without routine mammography screening, was evaluated in a trial that met criteria for fair quality (18, 56, 57). Despite a significant increase in the number of cases of breast cancer detected when BSE instruction was provided, there was no reduction in all-cause mortality (RR, 1.07 [CI, 0.88 to 1.29]) (18). A good-quality randomized trial conducted in Shanghai, China, indicated breast cancer rates of 6.5 per 1000 for women instructed in BSE and 6.7 per 1000 for control participants after 11 years of follow-up (58). The number of women who died of breast cancer was the same in both groups (135 of 132 979 and 131 of 133 085, respectively; RR, 1.03 [CI, 0.81 to 1.31]). Published meta-analyses of randomized trials (59–61) and nonrandomized studies (59–61) of BSE also indicate no significant differences in breast cancer mortality between BSE and control groups.

In the Russian (18) and Shanghai (58) trials, more women randomly assigned to BSE had benign biopsy results than women in control groups (RR, 2.05 [CI, 1.80 to 2.33] for women in the Russian study and 1.57 [CI, 1.48 to 1.68] for women in the Shanghai study). A retrospective cohort study of 27 421 women aged 40 years or older in the United States indicated that those performing more frequent or longer-duration BSEs were more likely than

Table 3. Summary of Evidence

Number of Studies and Type	Design	Limitations	Consistency; Overall Quality	Applicability	Findings
Breast cancer mortality reduction with mammography screening (key question 1a)					
8 for women aged 40–49 y; 1 for women aged 70–74 y; no screening trials of MRI or digital technologies	RCTs	Several trials were conducted before current mammography technology and treatment approaches; all trials met criteria for fair quality.	Consistent; fair	Fair: All trials but 1 were conducted outside of the United States but recruited large community-based populations.	For women aged 39–49 y, the combined relative risk for breast cancer mortality for 8 trials was 0.85 (95% CrI, 0.74–0.95); evidence for women aged 70 y or older is insufficient.
Harms associated with mammography screening (key question 2a)					
Several systematic reviews and primary studies; no studies of MRI for screening average-risk women	Several study designs and data sources, including RCTs, observational studies, surveys, and data from the BCSC	Adverse effects have been studied in various ways; most studies are descriptive.	Varies by type of harm; poor to good	Poor to good: The applicability of some studies, such as those about radiation exposure, may be low because they provide indirect evidence for the association between radiation exposure from routine mammography and breast cancer; other studies, such as those of patient anxiety with false-positive mammography results, come from direct patient experiences.	Evidence supports a relationship between radiation exposure and breast cancer with much higher doses of radiation than obtained through screening; pain during procedures is common, brief, and not a barrier; anxiety, distress, and other psychosocial effects of screening are usually transient and do not influence future screening practices; false-positive results are common; younger women have more false-positive mammography results and more additional imaging than older women, but rates of biopsy are lower; rates of overdiagnosis vary by study methodology and are 1%–10%.
Clinical breast examination screening benefits (key question 1b)					
1 (2 in progress)	RCT	The trial was discontinued after 1 round because of poor community acceptance.	Not applicable; poor	Poor	Inconclusive findings
Clinical breast examination screening harms (key question 2b)					
2	1 RCT and 1 descriptive study	Identified studies provide isolated descriptive data and are insufficient to address the question.	Not applicable; poor	Poor	Inconclusive findings
Breast self-examination screening benefits (key question 1c)					
2 trials and 3 systematic reviews	RCTs	Both trials were conducted in countries that do not have mass mammography screening.	Consistent; fair	Fair: Although trials were conducted in populations very different from the United States, results could be useful for U.S. practice.	Both trials indicated no reduction in mortality rates.

Continued on following page

Table 3—Continued

Number of Studies and Type	Design	Limitations	Consistency; Overall Quality	Applicability	Findings
Breast self-examination screening harms (key question 2c) 3	2 RCTs and 1 observational study	Both trials were conducted in countries that do not have mass mammography screening.	Not applicable; fair	Fair: Although trials were conducted in populations very different from the United States, results could be useful for U.S. practice.	2 trials indicated increased benign breast biopsies with breast self-examination instruction; biopsies were not increased in the observational study.

BCSC = Breast Cancer Surveillance Consortium; CrI = credible interval; MRI = magnetic resonance imaging; RCT = randomized, controlled trial.

women with less frequent and shorter BSEs to have diagnostic mammography or ultrasonography (62). Contrary to the Russian and Shanghai studies, there was no significant association between BSE and biopsy rates in this study.

DISCUSSION

Table 3 summarizes the evidence for this review. Breast cancer mortality benefits from RCTs of screening are based on estimates of women who were randomly assigned to screening, whereas harms are based on data from women actually screened.

Trials of mammography screening for women aged 39 to 49 years indicate a statistically significant 15% reduction in breast cancer mortality for women randomly assigned to screening versus those assigned to controls. This translates to a number needed to invite for screening to prevent 1 breast cancer death of 1904 (CrI, 929 to 6378). These results are similar to those for women aged 50 to 59 years but less than those for women aged 60 to 69 years. For women aged 70 years or older, results from the Swedish Two-County trial (26) of women aged 70 to 74 years indicate no mortality reduction. However, these results are limited by including only a few women from 1 sample. Interpreting trial results stratified by age requires caution because except for the Age trial (29), age-specific results are subanalyses of trials designed for different purposes.

Although the addition of the Age trial (29) did not markedly change the results of the meta-analysis, its contribution to the evidence base is important. The Age trial (29) is the only trial of mammography that specifically evaluates the effectiveness of screening women in their 40s. It is the largest trial and draws from a community population. It is the most recent trial that reflects current screening, diagnostic, and treatment practices better than its predecessors, particularly those from the pretamoxifen era. As such, it is the most relevant trial. However, its results, although consistent with the meta-analysis in the direction of benefit, are not statistically significant. Also, its applicability to U.S. women is not clear, in light of important

differences between mammography screening practices in the United States and the United Kingdom (63).

Harms of mammography screening have been identified, but their magnitude and effect are difficult to measure. The absolute level of radiation exposure and corresponding radiation risk from mammography is very low. Special considerations may be needed, however, for women exposed to additional radiation for other purposes or women particularly susceptible to radiation and breast cancer, such as *BRCA* mutation carriers. Patient adverse experiences, such as pain during procedures and anxiety and other psychological responses, are common but seem to be transient and do not adversely influence future screening practices. This may differ for individual women. Estimates of the magnitude of overdiagnosis vary depending on the analytic approach used. These estimates are difficult to apply because, for individual women, it is not known which types of cancer will progress, how quickly cancer will advance, and expected lifetimes.

The effectiveness of CBE has not been proven in large, well-designed trials. Current ongoing trials are limited to countries that do not provide routine mammography screening, which restricts their applicability to the United States. Work-ups for false-positive findings subject women to additional imaging and procedures countering the potential benefits of this low-technology approach. For BSE, the Russian (18) and Shanghai (58) trials simultaneously showed no reductions in mortality and increased numbers of benign biopsy results done as a result of BSE instruction.

Although more information is available to determine the benefits and harms of routine breast cancer screening in average-risk women, questions remain unanswered. The least amount of data is available for women aged 70 years or older, which is a rapidly growing population in the United States. Recent observational studies indicate that regular screening mammography among older women is associated with earlier-stage disease (64, 65) and lower breast cancer mortality rates (65). For the many older women who might live 20 to 30 years longer, breast cancer

detection and early treatment could reduce morbidity as well as mortality, thereby optimizing independence, function, quality of life, and costs of care in the final years.

Breast cancer is a continuum of entities, not just 1 disease that needs to be taken into account when considering screening and treatment options and when balancing benefits and harms. None of the screening trials consider breast cancer in this manner. As diagnostic and treatment experiences become more individualized (66) and include patient preferences, it becomes even more difficult to characterize benefits and harms in a general way.

New technologies, such as digital mammography and MRI, have become widely used in the United States without definitive studies of their effect on screening. Consumer expectations that new technology is better than old may obscure potential adverse effects, such as higher false-positive results and expense. No screening trials incorporating newer technology have been published, and estimates of benefits and harms in this report are based predominantly on studies of film mammography. No definitive studies of the appropriate interval for mammography screening exist, although trial data reflect screening intervals from 12 to 33 months.

Our meta-analysis of mammography screening trials indicates breast cancer mortality benefit for all age groups from 39 to 69 years, with insufficient data for older women. False-positive results are common in all age groups and lead to additional imaging and biopsies. Women aged 40 to 49 years experience the highest rate of additional imaging, whereas their biopsy rate is lower than that for older women. Mammography screening at any age is a tradeoff of a continuum of benefits and harms. The ages at which this tradeoff becomes acceptable to individuals and society are not clearly resolved by the available evidence.

From Oregon Health & Science University; Veterans Affairs Medical Center; and the Women and Children's Health Research Center, Providence Health & Services, Portland, Oregon.

Disclaimer: The findings and conclusions in this document are those of the authors, who are responsible for its content, and do not necessarily represent the views of the AHRQ. No statement in this report should be construed as an official position of AHRQ or of the U.S. Department of Health and Human Services.

Acknowledgment: The authors acknowledge the contributions of AHRQ Project Officer Mary Barton, MD, MPP, and USPSTF leads Russ Harris, MD, MPH; Allen Dietrich, MD; Carol Loveland-Cherry, PhD, RN; Judith Ockene, PhD, MD; and Bernadette Melnyk, PhD, RN, CPNP/NPP. The authors thank the BCSC investigators, participating mammography facilities, and radiologists for the data used in this project. A list of the BCSC investigators and procedures for requesting BCSC data for research purposes are available at <http://breastscreening.cancer.gov/>. They also thank Patricia A. Carney, PhD; Steve Taplin, MD; Sebastien Haneuse, PhD; and Rod Walker, MS; for direct work with investigators, along with Andrew Hamilton, MLS, MS, for literature searches, and Sarah Baird, MS, for managing the bibliography at the Oregon Evidence-based Practice Center at the Oregon Health & Science University.

Grant Support: By the Oregon Evidence-based Practice Center under contract to the AHRQ (contract 290-02-0024); the Veteran's Administration Women's Health Fellowship (Dr. Tyne); and the Oregon Health & Science University Department of Surgery in conjunction with the Human Investigators Program (Dr. Naik). Data collection for some of this work was supported by the National Cancer Institute-funded BCSC cooperative agreement (U01CA63740, U01CA86076, U01CA86082, U01CA63736, U01CA70013, U01CA69976, U01CA63731, U01CA70040). The collection of cancer incidence data used in this study was supported in part by several state public health departments and cancer registries throughout the United States. A full description of these sources is available at <http://breastscreening.cancer.gov/work/acknowledgement.html>.

Potential Conflicts of Interest: None disclosed.

Requests for Single Reprints: Heidi D. Nelson, MD, MPH, Oregon Evidence-based Practice Center, Oregon Health & Science University, Mailcode BICC, 3181 Southwest Sam Jackson Park Road, Portland, OR 97239-3098; e-mail, nelsonh@ohsu.edu.

Current author addresses and author contributions are available at www.annals.org.

References

1. U.S. Preventive Services Task Force. Screening for breast cancer: recommendations and rationale. *Ann Intern Med.* 2002;137:344-6. [PMID: 12204019]
2. Humphrey L, Chan BKS, Detlefsen S, Helfand M. Screening for breast cancer: systematic evidence review, 2002. Accessed at www.ncbi.nlm.nih.gov/books/bv.fcgi?rid=hstat3.chapter.27509 on 14 September 2009.
3. Humphrey LL, Helfand M, Chan BK, Woolf SH. Breast cancer screening: a summary of the evidence for the U.S. Preventive Services Task Force. *Ann Intern Med.* 2002;137:347-60. [PMID: 12204020]
4. American Cancer Society. Statistics for 2008. Accessed at www.cancer.org/docroot/STT/stt_0_2008.asp?sitearea=STT&level=1 on 14 September 2009.
5. Ries LAG, Harkins D, Krapcho M, Mariotto A, Miller BA, Feuer EJ, et al. SEER Cancer Statistics Review, 1975-2003. Bethesda, MD: National Cancer Institute. Accessed at http://seer.cancer.gov/csr/1975_2003/ on 14 September 2009.
6. Ravdin PM, Cronin KA, Howlader N, Berg CD, Chlebowski RT, Feuer EJ, et al. The decrease in breast-cancer incidence in 2003 in the United States. *N Engl J Med.* 2007;356:1670-4. [PMID: 17442911]
7. Kerlikowske K, Miglioretti DL, Buist DS, Walker R, Carney PA; National Cancer Institute-Sponsored Breast Cancer Surveillance Consortium. Declines in invasive breast cancer and use of postmenopausal hormone therapy in a screening mammography population. *J Natl Cancer Inst.* 2007;99:1335-9. [PMID: 17698950]
8. Chagpar AB, McMasters KM. Trends in mammography and clinical breast examination: a population-based study. *J Surg Res.* 2007;140:214-9. [PMID: 17418862]
9. American Cancer Society. Breast Cancer Facts & Figures 2005-2006. Accessed at www.cancer.org/downloads/STT/CAFF2005BrF.pdf on 14 September 2009.
10. Edwards BK, Brown ML, Wingo PA, Howe HL, Ward E, Ries LA, et al. Annual report to the nation on the status of cancer, 1975-2002, featuring population-based trends in cancer treatment. *J Natl Cancer Inst.* 2005;97:1407-27. [PMID: 16204691]
11. Berry DA, Cronin KA, Plevritis SK, Fryback DG, Clarke L, Zelen M, et al; Cancer Intervention and Surveillance Modeling Network (CISNET) Collaborators. Effect of screening and adjuvant therapy on mortality from breast cancer. *N Engl J Med.* 2005;353:1784-92. [PMID: 16251534]
12. Saslow D, Boetes C, Burke W, Harms S, Leach MO, Lehman CD, et al; American Cancer Society Breast Cancer Advisory Group. American Cancer Society guidelines for breast screening with MRI as an adjunct to mammography. *CA Cancer J Clin.* 2007;57:75-89. [PMID: 17392385]
13. Flobbe K, Bosch AM, Kessels AG, Beets GL, Nelemans PJ, von Meyenfeldt

- MF, et al. The additional diagnostic value of ultrasonography in the diagnosis of breast cancer. *Arch Intern Med*. 2003;163:1194-9. [PMID: 12767956]
14. **Bedrosian I, Mick R, Orel SG, Schnall M, Reynolds C, Spitz FR, et al.** Changes in the surgical management of patients with breast carcinoma based on preoperative magnetic resonance imaging. *Cancer*. 2003;98:468-73. [PMID: 12879462]
 15. **Day NE.** Overdiagnosis and breast cancer screening [Editorial]. *Breast Cancer Res*. 2005;7:228-9. [PMID: 16168144]
 16. **Nelson HD, Tyne K, Naik A, Bougatsos C, Chan BK, Nygren P, et al.** Screening for Breast Cancer: Systematic Evidence Review Update for the U.S. Preventive Services Task Force. Evidence Review Update. (Prepared by the Oregon Evidence-based Practice Center under contract 290-02-0024 with the Agency for Healthcare Research and Quality.) Rockville, MD: Agency for Healthcare Research and Quality; 2009.
 17. **Web of Science.** Accessed at http://isibofknowledge.com/products_tools/multidisciplinary/webofscience/ on 14 September 2009.
 18. **Semiglazov VF, Manikhas AG, Moiseenko VM, Protsenko SA, Kharikova RS, Seleznev IK, et al.** [Results of a prospective randomized investigation [Russia (St.Petersburg)/WHO] to evaluate the significance of self-examination for the early detection of breast cancer]. *Vopr Onkol*. 2003;49:434-41. [PMID: 14569932]
 19. **National Cancer Institute.** Breast Cancer Surveillance Consortium. Accessed at <http://breastcancer.screening.cancer.gov/> on 14 September 2009.
 20. **Ballard-Barbash R, Taplin SH, Yankaskas BC, Ernster VL, Rosenberg RD, Carney PA, et al.** Breast Cancer Surveillance Consortium: a national mammography screening and outcomes database. *AJR Am J Roentgenol*. 1997;169:1001-8. [PMID: 9308451]
 21. **Harris RP, Helfand M, Woolf SH, Lohr KN, Mulrow CD, Teutsch SM, et al; Methods Work Group, Third US Preventive Services Task Force.** Current methods of the US Preventive Services Task Force: a review of the process. *Am J Prev Med*. 2001;20:21-35. [PMID: 11306229]
 22. **Development Core Team.** R: A language and environment for statistical computing [Expert program]. Vienna, Austria: R Foundation for Statistical Computing; 2006.
 23. **Thomas A, O'Hara B, Ligges U, Sturtz S.** Making BUGS open. *R News*. 2006;6:12-17.24.
 24. **D'Orsi CJ, Bassett LW, Berg WA.** Follow-up and outcome monitoring. In: *Breast Imaging Reporting and Data System: ACR BIRADS*. 4th ed. Reston, VA: American Coll of Radiology; 2003:229-51.
 25. **Rosenberg RD, Yankaskas BC, Abraham LA, Sickles EA, Lehman CD, Geller BM, et al.** Performance benchmarks for screening mammography. *Radiology*. 2006;241:55-66. [PMID: 16990671]
 26. **Nyström L, Andersson I, Bjurström N, Frisell J, Nordenskjöld B, Rutqvist LE.** Long-term effects of mammography screening: updated overview of the Swedish randomised trials. *Lancet*. 2002;359:909-19. [PMID: 11918907]
 27. **Habbema JD, van Oortmarssen GJ, van Putten DJ, Lubbe JT, van der Maas PJ.** Age-specific reduction in breast cancer mortality by screening: an analysis of the results of the Health Insurance Plan of Greater New York study. *J Natl Cancer Inst*. 1986;77:317-20. [PMID: 3461193]
 28. **Miller AB, To T, Baines CJ, Wall C.** The Canadian National Breast Screening Study-1: breast cancer mortality after 11 to 16 years of follow-up. A randomized screening trial of mammography in women age 40 to 49 years. *Ann Intern Med*. 2002;137:305-12. [PMID: 12204013]
 29. **Moss SM, Cuckle H, Evans A, Johns L, Waller M, Bobrow L; Trial Management Group.** Effect of mammographic screening from age 40 years on breast cancer mortality at 10 years' follow-up: a randomised controlled trial. *Lancet*. 2006;368:2053-60. [PMID: 17161727]
 30. **Bjurström N, Björnelid L, Warwick J, Sala E, Duffy SW, Nyström L, et al.** The Gothenburg Breast Screening Trial. *Cancer*. 2003;97:2387-96. [PMID: 12733136]
 31. **Tabar L, Fagerberg G, Chen HH, Duffy SW, Smart CR, Gad A, et al.** Efficacy of breast cancer screening by age. New results from the Swedish Two-County Trial. *Cancer*. 1995;75:2507-17. [PMID: 7736395]
 32. **Tabár L, Vitak B, Chen HH, Duffy SW, Yen MF, Chiang CF, et al.** The Swedish Two-County Trial twenty years later. Updated mortality results and new insights from long-term follow-up. *Radiol Clin North Am*. 2000;38:625-51. [PMID: 10943268]
 33. **Spelic DC.** Dose and image quality in mammography: trends during the first decade of MQSA. Silver Spring, MD: U.S. Food and Drug Administration; 2003. Accessed at www.fda.gov/Radiation-EmittingProducts/MammographyQuality-StandardsActandProgram/FacilityScorecard/ucm113606.htm on 14 September 2009.
 34. **Armstrong K, Moye E, Williams S, Berlin JA, Reynolds EE.** Screening mammography in women 40 to 49 years of age: a systematic review for the American College of Physicians. *Ann Intern Med*. 2007;146:516-26. [PMID: 17404354]
 35. **John EM, Phipps AI, Knight JA, Milne RL, Dite GS, Hopper JL, et al.** Medical radiation exposure and breast cancer risk: findings from the Breast Cancer Family Registry. *Int J Cancer*. 2007;121:386-94. [PMID: 17372900]
 36. **Brett J, Bankhead C, Henderson B, Watson E, Austoker J.** The psychological impact of mammographic screening. A systematic review. *Psychooncology*. 2005;14:917-38. [PMID: 15786514]
 37. **Brewer NT, Salz T, Lillie SE.** Systematic review: the long-term effects of false-positive mammograms. *Ann Intern Med*. 2007;146:502-10. [PMID: 17404352]
 38. **Mushlin AI, Kouides RW, Shapiro DE.** Estimating the accuracy of screening mammography: a meta-analysis. *Am J Prev Med*. 1998;14:143-53. [PMID: 9631167]
 39. **Olivetto IA, Kan L, Coldman AJ.** False positive rate of screening mammography [Letter]. *N Engl J Med*. 1998;339:560; author reply 563. [PMID: 9714619]
 40. **Hofvind S, Thoresen S, Tretli S.** The cumulative risk of a false-positive recall in the Norwegian Breast Cancer Screening Program. *Cancer*. 2004;101:1501-7. [PMID: 15378474]
 41. **Elmore JG, Barton MB, Mocerri VM, Polk S, Arena PJ, Fletcher SW.** Ten-year risk of false positive screening mammograms and clinical breast examinations. *N Engl J Med*. 1998;338:1089-96. [PMID: 9545356]
 42. **Yankaskas BC, Taplin SH, Ichikawa L, Geller BM, Rosenberg RD, Carney PA, et al.** Association between mammography timing and measures of screening performance in the United States. *Radiology*. 2005;234:363-73. [PMID: 15670994]
 43. **Drossaert CH, Boer H, Seydel ER.** Does mammographic screening and a negative result affect attitudes towards future breast screening? *J Med Screen*. 2001;8:204-12. [PMID: 11743037]
 44. **Moss S.** Overdiagnosis and overtreatment of breast cancer: overdiagnosis in randomised controlled trials of breast cancer screening. *Breast Cancer Res*. 2005;7:230-4. [PMID: 16168145]
 45. **Paci E, Miccinesi G, Puliti D, Baldazzi P, De Lisi V, Falcini F, et al.** Estimate of overdiagnosis of breast cancer due to mammography after adjustment for lead time. A service screening study in Italy. *Breast Cancer Res*. 2006;8:R68. [PMID: 17147789]
 46. **Olsen AH, Agbaje OF, Myles JP, Lyng E, Duffy SW.** Overdiagnosis, sojourn time, and sensitivity in the Copenhagen mammography screening program. *Breast J*. 2006;12:338-42. [PMID: 16848843]
 47. **Zahl PH, Strand BH, Maehlen J.** Incidence of breast cancer in Norway and Sweden during introduction of nationwide screening: prospective cohort study. *BMJ*. 2004;328:921-4. [PMID: 15013948]
 48. **de Koning HJ, Draisma G, Fracheboud J, de Bruijn A.** Overdiagnosis and overtreatment of breast cancer: microsimulation modelling estimates based on observed screen and clinical data. *Breast Cancer Res*. 2006;8:202. [PMID: 16524452]
 49. **Duffy SW, Agbaje O, Tabar L, Vitak B, Bjurström N, Björnelid L, et al.** Overdiagnosis and overtreatment of breast cancer: estimates of overdiagnosis from two trials of mammographic screening for breast cancer. *Breast Cancer Res*. 2005;7:258-65. [PMID: 16457701]
 50. **Zackrisson S, Andersson I, Janzon L, Manjer J, Garne JP.** Rate of overdiagnosis of breast cancer 15 years after end of Malmö mammographic screening trial: follow-up study. *BMJ*. 2006;332:689-92. [PMID: 16517548]
 51. **Yen MF, Tabár L, Vitak B, Smith RA, Chen HH, Duffy SW.** Quantifying the potential problem of overdiagnosis of ductal carcinoma in situ in breast cancer screening. *Eur J Cancer*. 2003;39:1746-54. [PMID: 12888370]
 52. **Miller AB, To T, Baines CJ, Wall C.** Canadian National Breast Screening Study-2: 13-year results of a randomized trial in women aged 50-59 years. *J Natl Cancer Inst*. 2000;92:1490-9. [PMID: 10995804]
 53. **Pisani P, Parkin DM, Ngelangel C, Esteban D, Gibson L, Munson M, et al.** Outcome of screening by clinical examination of the breast in a trial in the Philippines. *Int J Cancer*. 2006;118:149-54. [PMID: 16049976]
 54. **Boulos S, Gadallah M, Neguib S, Essam E, Youssef A, Costa A, et al.** Breast screening in the emerging world: high prevalence of breast cancer in Cairo. *Breast*. 2005;14:340-6. [PMID: 16131468]

55. National Cancer Institute. U.S. National Institutes of Health. Cancer control research. Accessed at <http://cancercontrol.cancer.gov/grants/abstract.asp?applid=6965060> on 14 September 2009.
56. Semiglazov VF, Moiseenko VM, Manikhas AG, Protsenko SA, Kharikova RS, Popova RT, et al. [Interim results of a prospective randomized study of self-examination for early detection of breast cancer (Russia/St.Petersburg/WHO)]. *Vopr Onkol*. 1999;45:265-71. [PMID: 10443229]
57. Semiglazov VF, Moiseyenko VM, Bavli JL, Migmanova NSh, Seleznyov NK, Popova RT, et al. The role of breast self-examination in early breast cancer detection (results of the 5-years USSR/WHO randomized study in Leningrad). *Eur J Epidemiol*. 1992;8:498-502. [PMID: 1397215]
58. Thomas DB, Gao DL, Ray RM, Wang WW, Allison CJ, Chen FL, et al. Randomized trial of breast self-examination in Shanghai: final results. *J Natl Cancer Inst*. 2002;94:1445-57. [PMID: 12359854]
59. Hackshaw AK, Paul EA. Breast self-examination and death from breast cancer: a meta-analysis. *Br J Cancer*. 2003;88:1047-53. [PMID: 12671703]
60. Baxter N; Canadian Task Force on Preventive Health Care. Preventive health care, 2001 update: should women be routinely taught breast self-examination to screen for breast cancer? *CMAJ*. 2001;164:1837-46. [PMID:

11450279]

61. Kösters JP, Göttsche PC. Regular self-examination or clinical examination for early detection of breast cancer. *Cochrane Database Syst Rev*. 2003; CD003373. [PMID: 12804462]
62. Tu SP, Reisch LM, Taplin SH, Kreuter W, Elmore JG. Breast self-examination: self-reported frequency, quality, and associated outcomes. *J Cancer Educ*. 2006;21:175-81. [PMID: 17371185]
63. Smith-Bindman R, Chu PW, Miglioretti DL, Sickles EA, Blanks R, Ballard-Barbash R, et al. Comparison of screening mammography in the United States and the United Kingdom. *JAMA*. 2003;290:2129-37. [PMID: 14570948]
64. Badgwell BD, Giordano SH, Duan ZZ, Fang S, Bedrosian I, Kuerer HM, et al. Mammography before diagnosis among women age 80 years and older with breast cancer. *J Clin Oncol*. 2008;26:1-8. [PMID: 18427152]
65. Galit W, Green MS, Lital KB. Routine screening mammography in women older than 74 years: a review of the available data. *Maturitas*. 2007;57:109-19. [PMID: 17336004]
66. Tripathy D. Targeted therapies in breast cancer. *Breast J*. 2005;11 Suppl 1:S30-5. [PMID: 15725114]



ACPSM
AMERICAN COLLEGE OF PHYSICIANS
INTERNAL MEDICINE | Doctors for Adults

Annals
Podcasts

Listen at www.annals.org/podcast
or at iTunes

Current Author Addresses: Drs. Nelson and Humphrey, Ms. Bougatsos, and Mr. Chan: Oregon Evidence-based Practice Center, Oregon Health & Science University, Mailcode BICC, 3181 Southwest Sam Jackson Park Road, Portland, OR 97239-3098.

Dr. Tyne: 1112 Woodland Trail, Northfield, MN 55057

Dr. Naik: The Breast Center, Oregon Health & Science University, 3181 Southwest Sam Jackson Park Road, Portland, OR 97239-3098.

Author Contributions: Conception and design: H.D. Nelson, A. Naik, C. Bougatsos, B.K. Chan, L. Humphrey.

Analysis and interpretation of the data: H.D. Nelson, K. Tyne, A. Naik, B.K. Chan, L. Humphrey.

Drafting of the article: H.D. Nelson, K. Tyne, A. Naik, C. Bougatsos, B.K. Chan.

Critical revision of the article for important intellectual content: H.D. Nelson, A. Naik, B.K. Chan, L. Humphrey.

Final approval of the article: H.D. Nelson, A. Naik, B.K. Chan, L. Humphrey.

Provision of study materials or patients: H.D. Nelson, A. Naik, B.K. Chan.

Obtaining of funding: H.D. Nelson, A. Naik, B.K. Chan.

Administrative, technical, or logistic support: H.D. Nelson, A. Naik, C. Bougatsos, B.K. Chan.

Collection and assembly of data: H.D. Nelson, A. Naik, C. Bougatsos, B.K. Chan, L. Humphrey.

67. Smeeth L, Haines A, Ebrahim S. Numbers needed to treat derived from meta-analyses—sometimes informative, usually misleading. *BMJ*. 1999;318:1548-51. [PMID: 10356018]

APPENDIX: DETAILS OF THE META-ANALYSIS

The meta-analysis is an update of the previous 2002 meta-analysis that includes results from published trials of mammography screening for women aged 40 to 49 years that report reduction in breast cancer mortality. With the addition of only 1 new data point, the meta-analysis for the update was less extensive than the 2002 meta-analysis. We did not update the model for RR and length of follow-up (the 2-level hierarchical model). We conducted similar updates for other age groups for context.

As with the original 2002 meta-analysis, we estimated the model by using a Bayesian data analytic framework, but this time using the BRugs package in R (22, 23). BRugs is an R interface to OpenBUGS, the successor to WinBUGS. The R code to create the data set is below.

```
# R code to create dataset
study <- c('Age', 'CNBSS-1', 'HIP', 'Gothenburg', 'Stockholm', 'Malmo', 'Kopparberg', 'Ostergotland')
y.int <- c(105, 105, 64, 34, 34, 53, 22, 31)
n.int <- c(53884, 25214, 13740, 11724, 14303, 13568, 9582, 10285)
py.int <- c(578390, 282606, 192360, NA, 203000, 184000, 124566, 172000)
y.cntl <- c(251, 108, 82, 59, 13, 66, 16, 30)
n.cntl <- c(106956, 25216, 13740, 14217, 8021, 12279, 5031, 10459)
py.cntl <- c(1149380, 282575, 192360, NA, 117000, 160000, 65403, 176000)
n <- 10000
```

```
rate.int <- n * y.int / n.int
rate.cntl <- n * y.cntl / n.cntl
rr <- rate.int / rate.cntl
rd <- rate.int - rate.cntl
nns <- 1 / ((y.cntl / n.cntl) - (y.int / n.int))
dataset <- data.frame(
  study,
  y.int, n.int, py.int, rate.int,
  y.cntl, n.cntl, py.cntl, rate.cntl,
  rr, rd, nns
)
# Save dataset for BRugs to use
dataset.bugs <- cbind(y.int, n.int, y.cntl, n.cntl)
colnames(dataset.bugs) <- c("y.int", "n.int", "y.cntl", "n.cntl")
bugsData(data.frame(dataset.bugs),
  fileName="dataset.bugs", digits = 5)
constants <- cbind(nrow(dataset.bugs))
colnames(constants) <- c("n")
bugsData(data.frame(constants),
  fileName="constants.bugs", digits = 1)
```

The model assumes that the number of deaths from each study come from a binomial distribution with the probability parameter of α for the control group and $\alpha + \beta$ for the screening group. A random component, σz_i , is added to both probability parameters to allow for the random effect of the study i . Non-informative prior probability distributions were used.

```
# BUGS model
# This model is saved in a text file named "model.bugs"
model;
{
  for( i in 1 : n ) {
    z[i] ~ dnorm(0, 1)
    logit(p.int[i]) <- alpha + beta + sigma * z[i]
    logit(p.cntl[i]) <- alpha + sigma * z[i]
    y.int[i] ~ dbin(p.int[i], n.int[i])
    y.cntl[i] ~ dbin(p.cntl[i], n.cntl[i])
  }
  alpha ~ dnorm(-5.0, 1.0E-1)
  beta ~ dnorm(0.0, 1.0E-1)
  sigma ~ dnorm(0.5, 1.0E-1) I(0, )
}
```

Four separate Markov chains with overdispersed initial values were used for estimation. A burn-in of 10 000 draws was used to initialize the chains and were checked for convergence.

```
# Check the model and load the dataset
modelCheck("model.bugs")
modelData("constants.bugs")
modelData("dataset.bugs")
# Compile the model with 4 MCMC chains
modelCompile(numChains = 4)
# Generate overdispersed initial values
modelGenInits()
```



```

# Keep MCMC samples of parameters alpha, beta, and
sigma
samplesSet("alpha")
samplesSet("beta")
samplesSet("sigma")
# Thin samples so only 1000 draws are left
samplesSetThin(10000/(1000/getNumChains()))
# Generate 10,000 burn-in draws
modelUpdate(10000)
samplesHistory("*", thin=samplesGetThin())

```

The convergence of the parameter estimation was assessed and deemed adequate from the 10 000 burn-in draws. Next, we generated 100 000 draws from the 4 chains. These draws were thinned to yield a sample of 1000 uncorrelated estimates from the posterior distributions.

```

# Clear samples from the previous burn-in
samplesClear("*")
# Keep MCMC samples of parameters alpha, beta, and
sigma
samplesSet("alpha")
samplesSet("beta")
samplesSet("sigma")
# Thin samples so only 1000 draws are left
samplesSetThin(100000/(1000/getNumChains()))
modelUpdate(100000)
samplesHistory("*", thin=samplesGetThin())
# Check correlation of the thinned samples
for (i in 1:getNumChains()) {
samplesAutoC("*", i, thin=samplesGetThin())
}
# Check the probability distribution of the parameters
samplesDensity("*", thin=samplesGetThin())
# Output sample estimates to an R object
brugs.nodes <- samplesHistory("*", thin=samplesGetThin(),
plot=FALSE)

```

After the model was estimated and the samples were thinned, sample rates per 10 000 women screened with mammography and control participants were calculated from the estimates of α and β . Sample RR, risk difference, and number needed to invite to screening were calculated from the sample rates.

```

# Assign parameter samples to separate R vectors
alpha <- as.vector(brugs.nodes$alpha)
beta <- as.vector(brugs.nodes$beta )
sigma <- as.vector(brugs.nodes$sigma)
# Rate calculations
# Note: this produces 1000 samples for each rate, RR, RD,
and NNS
n <- 10000
rate1 <- n * exp(alpha+beta) / (1+exp(alpha+beta))
rate2 <- n * exp(alpha) / (1+exp(alpha))
rr <- rate1 / rate2
rd <- rate1 - rate2

```

```
nns <- n / (rate2 - rate1)
```

From the 1000 thinned posterior samples, point estimates (mean) and 95% CrIs (2.5 and 97.5 percentiles) for RR, risk difference, and number needed to invite to screening were calculated.

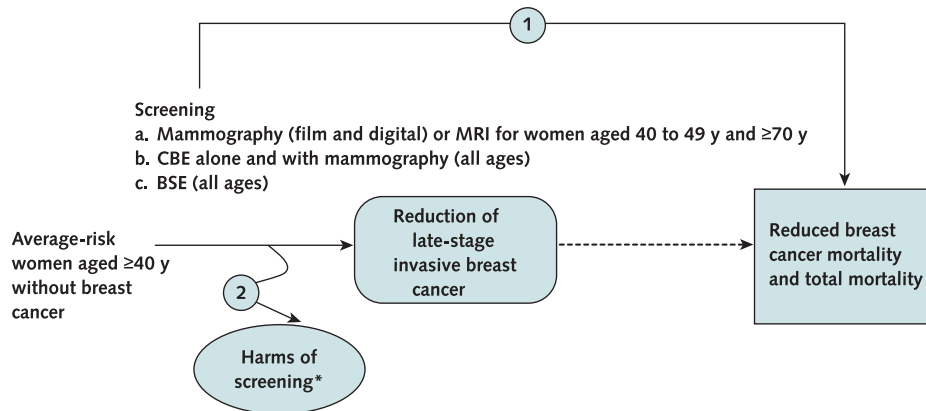
```

# Define R function; it will be used a number of times
brugs.nodessummary <- function(x, name) {
Samples <- length(x)
Mean <- mean(x)
SD <- sd(x)
MCMC.error <- sd(x) / sqrt(length(x))
Median <- median(x)
P.025 <- quantile(x, prob=c(0.025))
P.975 <- quantile(x, prob=c(0.975))
nodesummary <- data.frame(cbind(Samples, Mean, Me-
dian, P.025, P.975, SD, MCMC.error))
rownames(nodesummary) <- name
colnames(nodesummary) <- c("Samples", "Mean", "Me-
dian", "P.025", "P.975", "SD", "MCMC.error")
data.frame(nodesummary)
}
# Call defined function brugs.nodessummary
print(brugs.nodessummary(alpha , "alpha" ))
print(brugs.nodessummary(beta , "beta" ))
print(brugs.nodessummary(sigma , "sigma" ))
print(brugs.nodessummary(rate1 , "rate1" ))
print(brugs.nodessummary(rate2 , "rate2" ))
print(brugs.nodessummary(rr , "rr" ))
print(brugs.nodessummary(rd , "rd" ))
print(brugs.nodessummary(nns , "nns" ))

```

The pooled number needed to invite to screening could be misleading if the baseline risk for mortality is appreciably varied between studies (67). One recommendation to accommodate this is to apply the pooled RR estimate to a range of control rates and then calculate the number needed to invite to screening. The pooled rate of mortality among the control groups of our studies was estimated to be 35.5 deaths per 10 000 women (95% CrI, 25.1 to 48.3). The range of mortality rates among the control groups was 16.2 to 59.7 per 10 000 women. Applying the pooled RR estimate of 0.85 to the high end of the mortality rate range (59.7) yields a number needed to invite to screening estimate of 1116 per 10 000 women. Applying the pooled RR estimate of 0.85 to the low end of the mortality rate range (16.2) yields a number needed to invite to screening estimate of 4115 per 10 000 women. This range 1116 to 4115 per 10 000 women is within the 95% CrI that we report for number needed to invite to screening that we estimated from the posterior distributions of our mortality rate estimates. Alternatively, the bounds of our 95% CrI to number needed to invite to screening correspond to a range of control group mortality rates of 10.5 to 71.8 per 10 000 women, a range beyond that seen in the studies included in our analysis.

Appendix Figure 1. Analytic framework and key questions.



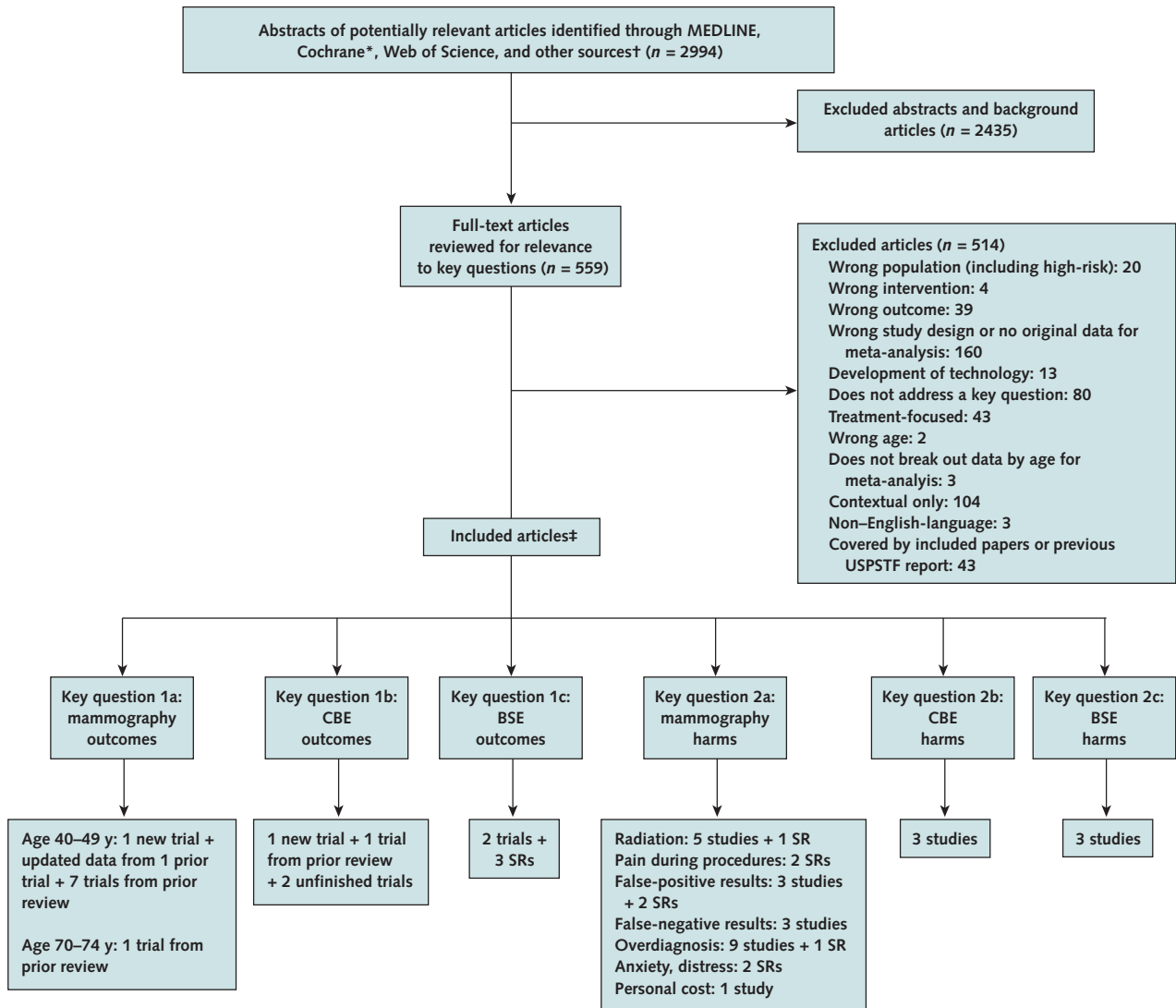
Key Questions

- 1a. Does screening with mammography (film and digital) or MRI decrease breast cancer mortality among women aged 40 to 49 y and ≥70 y?
- 1b. Does CBE screening decrease breast cancer mortality? Alone or with mammography?
- 1c. Does BSE practice decrease breast cancer mortality?
- 2a. What are the harms associated with screening with mammography (film and digital) and MRI?
- 2b. What are the harms associated with CBE?
- 2c. What are the harms associated with BSE?

BSE = breast self-examination; CBE = clinical breast examination; MRI = magnetic resonance imaging.

* Includes radiation exposure, pain, psychological responses, false-positive and false-negative test results, and overdiagnosis.

Appendix Figure 2. Literature search and selection.



BSE = breast self-examination; CBE = clinical breast examination; SR = systematic review; USPSTF = U.S. Preventive Services Task Force.

* Cochrane databases include the Cochrane Central Register of Controlled Trials and the Cochrane Database of Systematic Reviews.

† Other sources include reference lists and studies suggested by experts.

‡ Some articles are included for more than 1 key question.

Appendix Table 1. Mammography Screening Trials Included in Meta-analysis

Study, Year (Reference)	Baseline Study Year	Setting or Population (Screened Patients; Control Participants)	Enrollment Age, y	Randomization Method	Study Group	Screening Protocol			Follow-up, y	USPSTF Quality Rating
						Interval, mo	Round, n	View, n		
Health Insurance Plan of Greater New York, 1986 (27)	1963	New York health plan members (30 239; 30 256)	40–64	Pairs of women stratified by age and family size were individually randomly assigned by a drawing from a list	Mammography + CBE vs. usual care	12	4	2	18	Fair
Canadian National Breast Screening Study-1, 2002 (28)	1980	15 centers in Canada, self-selected participants (25 214; 25 216)	40–49	Blocks were stratified by center and 5-y age group after CBE	Mammography + CBE vs. usual care (all women prescreened and instructed in BSE)	12	4–5	2	13	Fair
Gothenburg Breast Screening trial, 2003 (30)*	1982	All women born from 1923–1944 who lived in Gothenburg, Sweden (20 724; 28 809)	39–59	Cluster, based on day of birth (1923–1935 cohort [18%]) and individual (1936–1944 cohort [82%])	Mammography vs. usual care; control participants offered screening after 5 y and completed screening at approximately 7 y	18	5	1–2	12	Fair
Stockholm, 2002 (26)	1981	Residents of southeast greater Stockholm, Sweden (40 318; 19 943)	40–64	Individual, by day of month; screening to control group ratio is 2:1	Mammography vs. usual care	24–28	2	1	11.4	Fair
Malmö, 2002 (26)	1976–1978	All women born from 1927–1945 living in Malmö, Sweden (21 088; 21 195)	45–70	Individual, within birth year	Mammography vs. usual care; control participants offered screening after 14 y	18–24	9	1–2	11–13; 15.5	Fair
Swedish Two-County trial (2 trials), 2002 (26); 1995 (31)	1977	From Östergötland and Kopparberg counties in Sweden (77 080; 55 985)	40–74	Clusters, based on geographic units; blocks designed to be demographically homogeneous	Mammography vs. usual care; control participants offered screening after 7 y	24–33	3	1	20; 15.5	Fair
Age trial, 2006 (29)*	1991	23 National Health Service breast screening units in England, Scotland, and Wales (53 884; 106 956)	39–41	Individual, stratified by general practitioner group with random-number generation (1991–1992); randomization through Health Authority computer system (1992–onward)	Mammography vs. usual care; all women offered screening at age 50–52 y	12	4–6, varied by center	2	10.7	Fair

BSE = breast self-examination; CBE = clinical breast examination; USPSTF = U.S. Preventive Services Task Force.

* New data since previous recommendation.

Appendix Table 2. Trials of CBE and BSE

Study, Year (Reference)	Technique	Years	Setting or Population (Screened Patients; Control Participants)	Enrollment Age, y	Study Design	Intervention	Outcomes and Ratings		
							Primary Outcomes	Secondary Outcomes	USPSTF Quality Rating
Pisani et al, 2006 (53)	CBE	1996–1997	Manila, Philippines; women living in the 12 central areas (151 168; control participants not indicated)	35–64	RCT; block randomization of 202 health centers	5 annual CBEs vs. usual care provided by nurses and midwives; CBE instruction using the Mammacare program*	Breast cancer mortality not reported	False-negative result: 80 of 133 diagnosed cases of breast cancer; false-positive result: 1182 of 1220 (96.9%) of those who completed follow-up†	Poor: low participation; discontinued after 1 round
Boulos et al, 2005 (54)	CBE or BSE	Pilot: 2000–2002; RCT: ongoing	Cairo, Egypt; women living in area around Italian Hospital (1924; 1927)	39–65	RCT; block randomization	CBE/BSE twice (intervention) vs. CBE/BSE once (control) provided by female physicians; CBE training at Italian Hospital 2 mo before study	Breast cancer incidence	Benign procedures: 1.2% after 1 round	Not rated (in progress)
National Cancer Institute (55)‡	CBE or BSE	1998 and ongoing	Mumbai, India; women living in area around Tata Memorial Hospital (150 000; control participants not indicated)	35–64	RCT; cluster randomization	CBE + BSE + breast health education every 24 mo for 4 rounds vs. education alone provided by trained female health workers; CBE training for 5 mo before trial	Breast cancer mortality	Not available	Not rated (in progress)
Thomas et al, 2002 (58)	BSE	1989–2000	Shanghai, China; women working at 1 of 519 factories (132 979; 133 085)	31–65	RCT; factories assigned to BSE or control group	BSE instruction with periodic reinforcement provided by trained former factory medical workers vs. no instruction; initial BSE instruction, follow-up sessions at 1 and 3 y, medically supervised BSE every 6 mo	Breast cancer mortality: RR, 1.03 (95% CI, 0.81–1.31)	Benign biopsies: RR, 1.57 (CI, 1.48–1.68)	Good
Semiglazov et al, 2003 (18)	BSE	1985–2001	St. Petersburg, Russia; women attending 1 of 28 clinics (58 985; 64 763)	40–64	RCT; cluster randomization	BSE instruction with refresher every 3 y provided by trained nurses or physicians vs. no instruction; providers received 3-h training; instruction given to groups of 5–20 women	All-cause mortality: RR, 1.07 (CI, 0.88–1.29)	Benign biopsies: RR, 2.05 (CI, 1.80–2.33)	Fair: low adherence; inconsistent data reported

BSE = breast self-examination; CBE = clinical breast examination; RCT = randomized, controlled trial; RR = relative risk; USPSTF = U.S. Preventive Services Task Force.

* Gainesville, Florida.

† Risks are not calculated because diagnostic follow-up for a positive CBE was 35%.

‡ Trial is in progress.